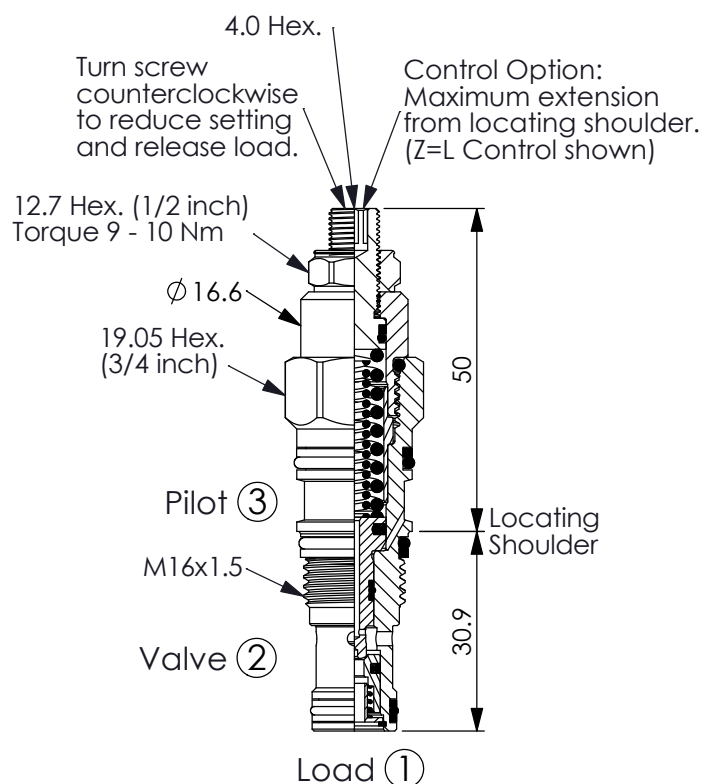


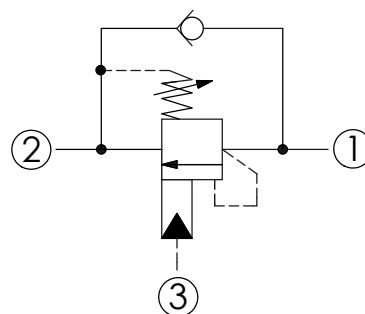
COUNTERBALANCE VALVE

Ordering Code: **CB-163A-X-Y-Z**



UNIT:mm

Illustrations / detail are for reference only. Data subject to change.

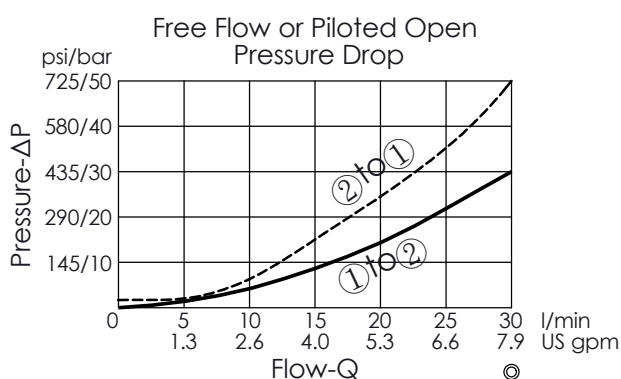


TECHNICAL DATA

Max. Setting:	350	bar
Rated flow:	30	l/min
Cavity-Tooling:	163A-3	
Installation torque:	27 - 33	Nm
Weight:	0.094 (Z=L)	kg

Pressure Setting:

Setting should be 1.3 times maximum load induced pressure.
(We suggest when the Max. setting pressure is 350 bar, the load pressure has to be lower than 270 bar.)



X PILOT RATIO

3D 4.5 : 1
(with sealed pilot)

Y

SPRINGS

ADJUSTMENT RANGES(1.7 bar Cracking Pressure)

J

140 - 350 bar (210 bar Standard Setting)

Z

OPTIONS

L

Leakproof hex. socket screw.



LP

Leakproof hex. socket screw.
With stainless steel external metal components



C

Stainless Steel Tamper Resistant Cover.

