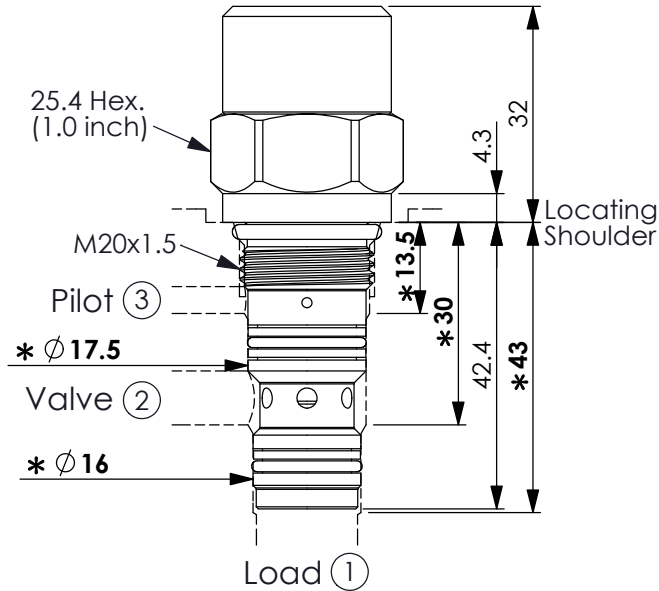


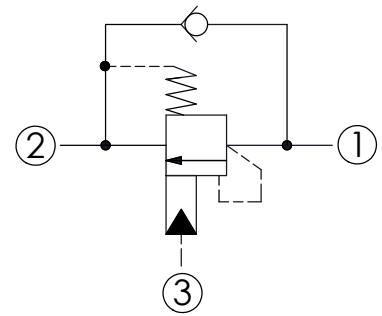
Ordering Code: **CB-20MS-X-Y-Z**



*Cavity dimensions should be noted

UNIT:mm

Illustrations / detail are for reference only. Data subject to change.

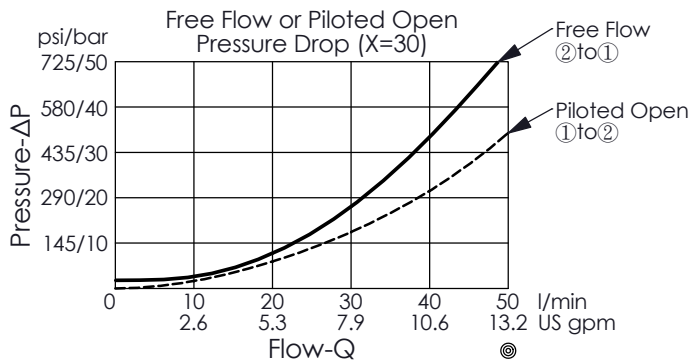


TECHNICAL DATA

Max. Setting:	350	bar
Rated flow:	30	l/min
Cavity-Tooling:	20MS-3	
Installation torque:	40 - 50	Nm
Weight:	0.162	kg

Pressure Setting:

Setting should be 1.3 times maximum load induced pressure.
(We suggest when the Max. setting pressure is 350 bar, the load pressure has to be lower than 270 bar.)



X	PILOT RATIO	
30	10 : 1	

Y	SPRINGS	
	FIXED SETTING	
345	325 - 365 bar	

Z	OPTION	
N	Non-adjustable 2.0 bar Cracking Pressure	