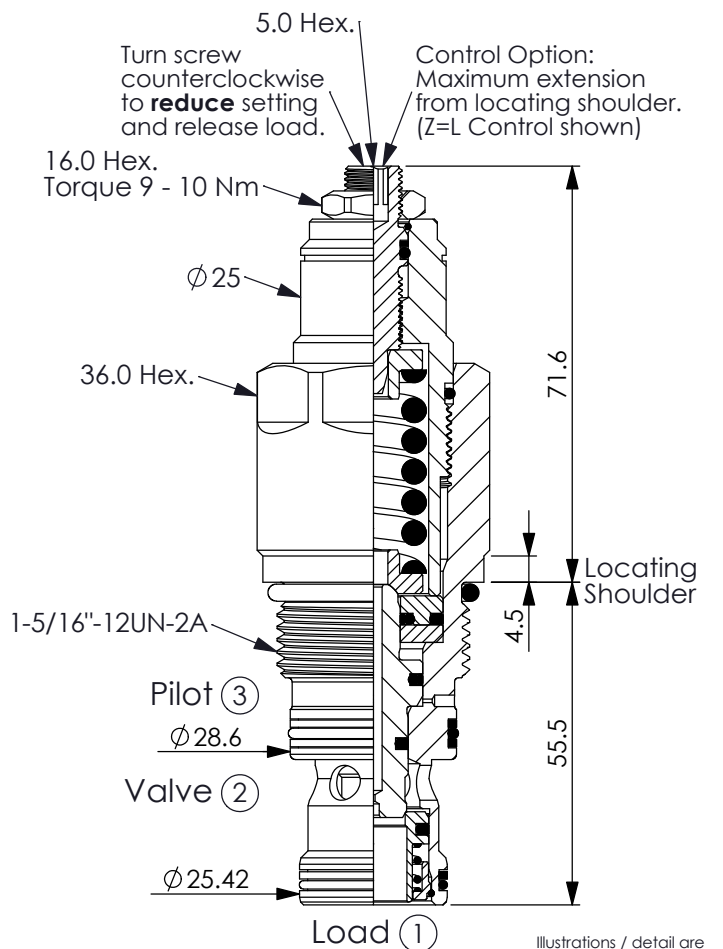


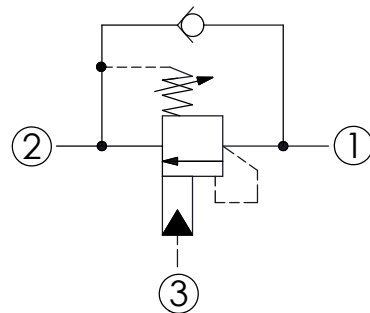
COUNTERBALANCE VALVE

Ordering Code: **CBA-16WS-X-Y-Z**



UNIT:mm

Illustrations / detail are for reference only.
Data subject to change.



TECHNICAL DATA

Max. operating pressure: 350 bar

Rated flow: 200 l/min

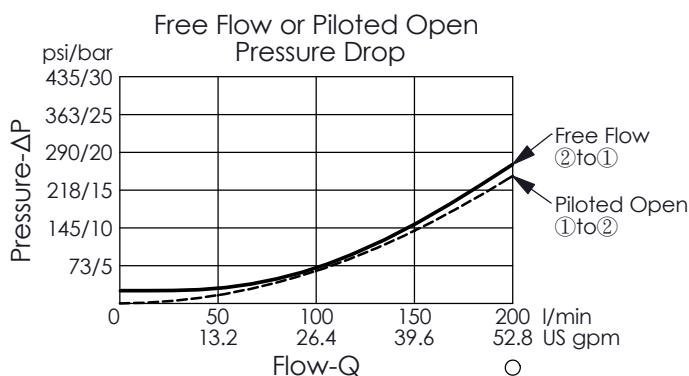
Cavity-Tooling: 16WS-3

Installation torque: 80 - 100 Nm

Weight: 0.585 (Z=L) kg

Pressure Setting:

Setting should be 1.3 times maximum load induced pressure.
(We suggest when the Max. setting pressure is 350 bar, the load pressure has to be lower than 270 bar.)



X

PILOT RATIO

3D

4 : 1 (with sealed pilot)

Y

SPRINGS

ADJUSTMENT RANGES(1.7 bar Cracking Pressure)

J

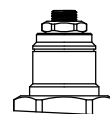
140 - 350 bar (210 bar Standard Setting)

Z

OPTIONS

L

Leakproof hex. socket screw.



CA

Plastic Tamper Resistant Cover
(Order Code: 5JAA099)

