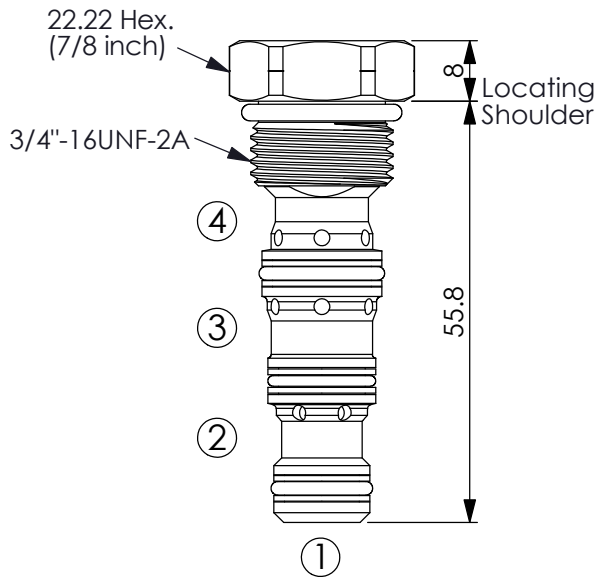
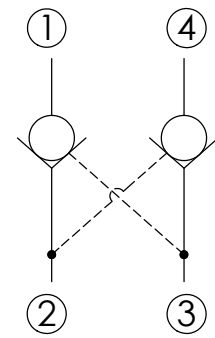


Ordering Code: **CO-08W-X-Y-Z**



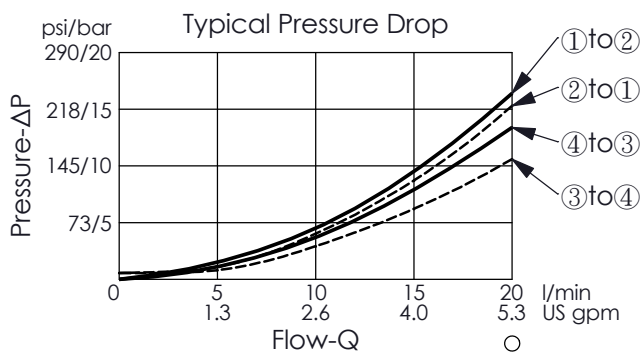
UNIT:mm

Illustrations / detail are for reference only. Data subject to change.



TECHNICAL DATA

Max. pressure:	240	bar
Rated flow:	19	l/min
(Refer To Performance Chart)		
Cavity-Tooling:	08W-4	
Installation torque:	25 - 35	Nm
Weight:	0.073	kg
· Maximum Leakage Approximately (5 drops/min./210 bar)		



X OPERATION

43	Pilot Ratio 3:1
4C	Sealed Pilot Piston Pilot Ratio 3:1

Y

SPRINGS

Cracking pressure

17	1.7 bar (Only X=43)
60	6.0 bar
95	9.5 bar

Z

OPTION

N	Non-adjustable
----------	----------------