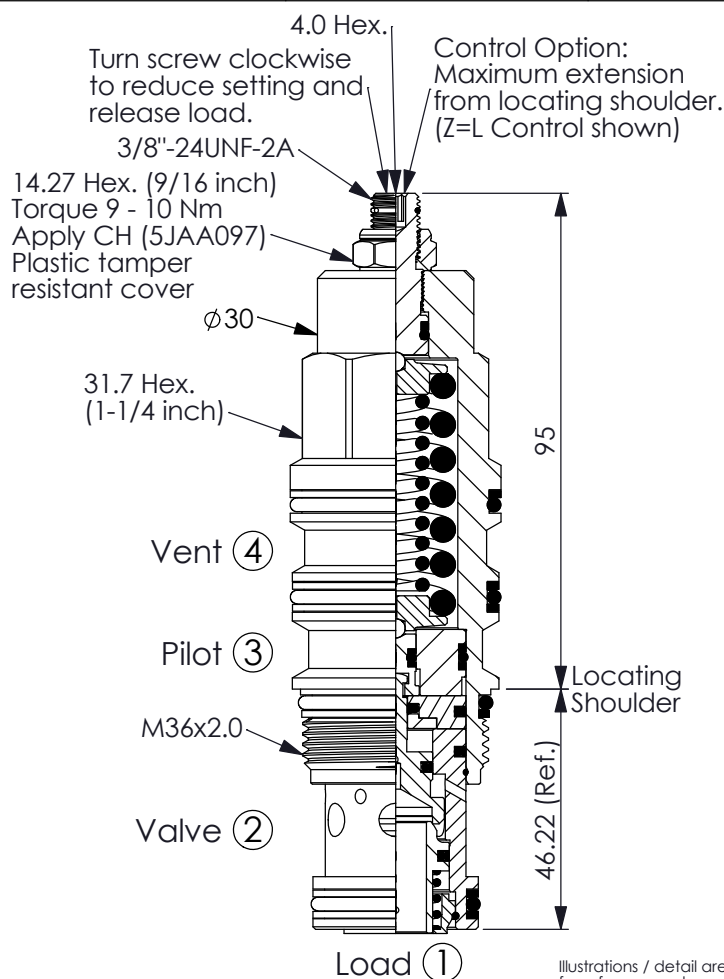


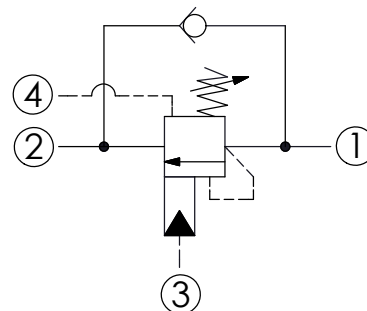
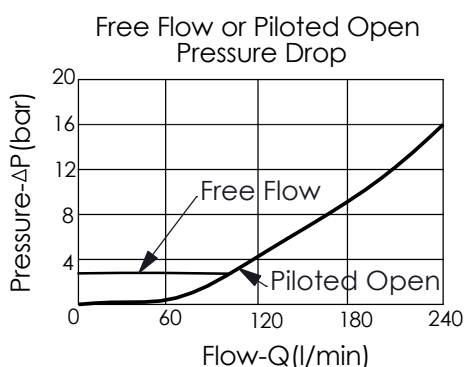
## COUNTERBALANCE VALVE (Vented, 420 Bar Maximum Setting)

Ordering Code: **CW-23A-X-Y-Z**



UNIT:mm

Illustrations / detail are for reference only. Data subject to change.



### TECHNICAL DATA

Max. Setting:	420	bar
Rated flow:	240	l/min
Cavity-Tooling:	23A-4	
Installation torque:	200 - 215	Nm
Weight:	0.73	kg

### Pressure Setting:

Setting should be 1.3 times maximum load induced pressure.  
(We suggest when the Max. setting pressure is 420 bar, the load pressure has to be lower than 320 bar.)

### X PILOT RATIO

<b>4B</b>	2 : 1 (with sealed pilot)
<b>4E</b>	5 : 1 (with sealed pilot)

### Z OPTIONS

<b>L</b>	Leakproof hex. socket screw.	
<b>LP</b>	Leakproof hex. socket screw. With Stainless Steel external metal components	
<b>C</b>	Stainless Steel Tamper Resistant Cover.	
<b>CH</b>	Plastic Tamper Resistant Cover of General Type Hex. Nut (Order Code:5JAA097)	

Y	SPRINGS	
	ADJUSTMENT RANGES(1.7 bar Cracking Pressure)	
<b>F</b>	70 - 175 bar (140 bar Standard Setting)	
<b>G</b>	140 - 420 bar (280 bar Standard Setting)	