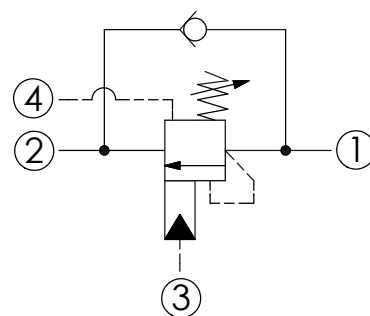
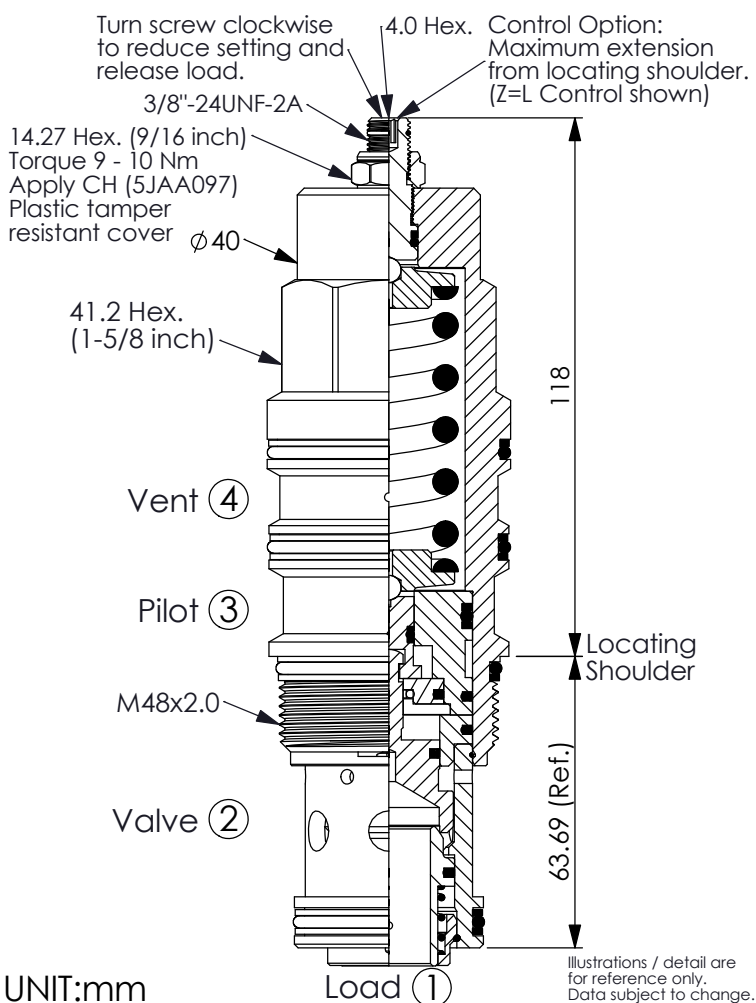


COUNTERBALANCE VALVE (Vented, 420 Bar Maximum Setting)

Ordering Code: **CW-24A-X-Y-Z**

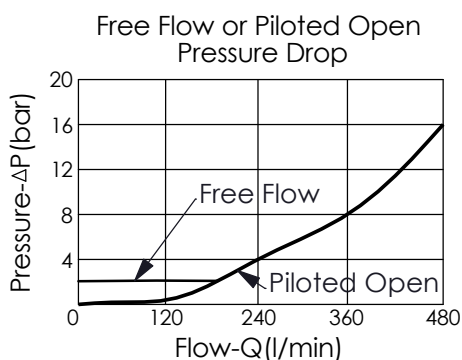


TECHNICAL DATA

Max. Setting:	420	bar
Rated flow:	480	l/min
Cavity-Tooling:	24A-4 (24AB-4)	
Installation torque:	465 - 500 Nm	
Weight:	1.60	kg

Pressure Setting:

Setting should be 1.3 times maximum load induced pressure.
(We suggest when the Max. setting pressure is 420 bar, the load pressure has to be lower than 320 bar.)



X PILOT RATIO

4B	2 : 1 (with sealed pilot)
4E	5 : 1 (with sealed pilot)

Y

SPRINGS

ADJUSTMENT RANGES(1.5 bar Cracking Pressure)

F

70 - 175 bar (140 bar Standard Setting)

G

140 - 420 bar (280 bar Standard Setting)

Z

OPTIONS

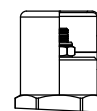
L

Leakproof hex. socket screw.



C

Stainless Steel Tamper Resistant Cover.



CH

Plastic Tamper Resistant Cover of General Type Hex. Nut (Order Code:5JAA097)

