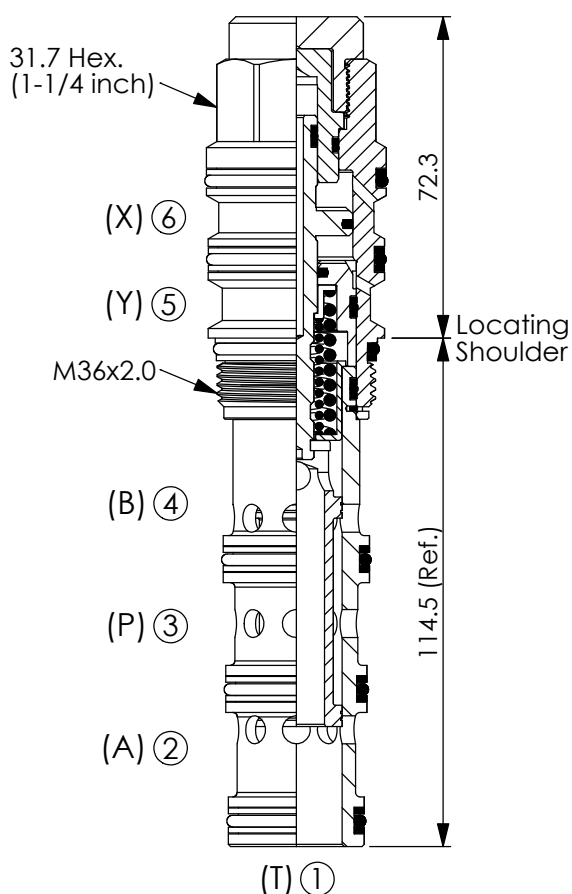


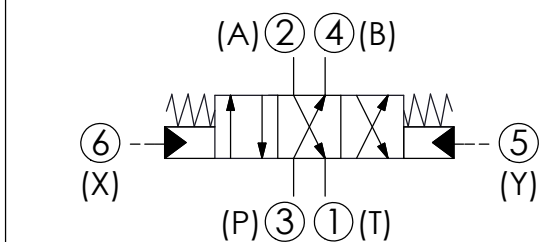
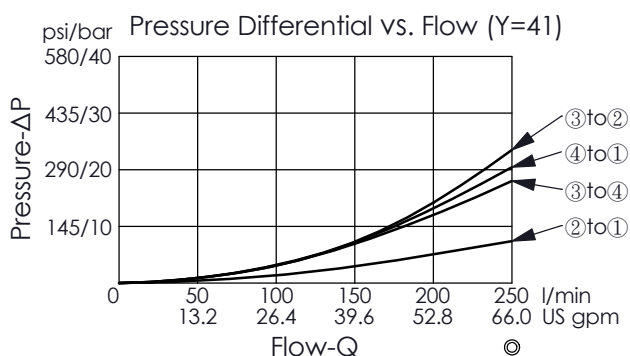
DIRECTIONAL VALVE (4-Way, 3-Position Spool, Pilot-to-shift)

Ordering Code: **DC-63A-X-Y-Z**

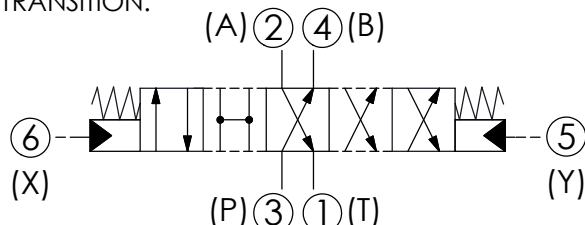


UNIT:mm

Illustrations / detail are for reference only.
Data subject to change.



TRANSITION:



TECHNICAL DATA

Max. Operating pressure: 350 bar

Rated flow: 95 - 380 l/min
(Refer To Performance Chart)

Cavity-Tooling: 63A-6

Installation torque: 200 - 215 Nm

Weight: 0.839 kg

- Minimum Pilot Pressure Required to Shift Valve : 9 bar.
- Maximum Leakage Approximately (30 cc/min./70 bar)
- All ports will accept 350 bar.

X	OPERATION	
6E	Pilot-to-shift	

Y	SPOOL CONFIGURATION	
41	Spool 4-Way, 3-Position, P to B and A to T Centre	

Z	OPTIONS	
N	Non-adjustable	