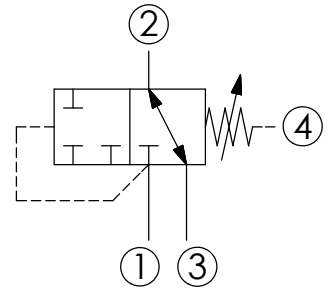
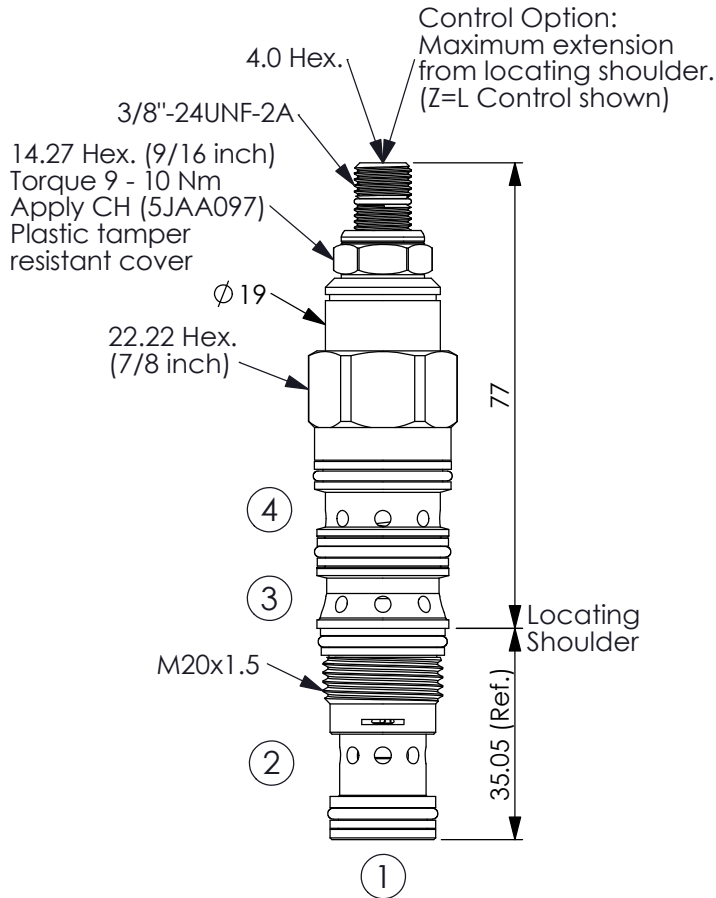


DIRECTIONAL VALVE (3-Way, 2-Position, Direct Acting, Normally-Open, Ports ② and ③ Connected, Shifts to All Ports Blocked)

Ordering Code: **DD-21A-X-Y-Z**



TECHNICAL DATA

Max. pressure: 350 bar

Rated flow: 28 l/min

Cavity-Tooling: 21A-4

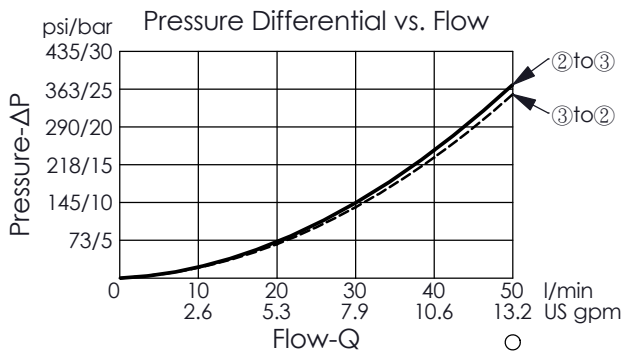
Installation torque: 40 - 50 Nm

Weight: 0.174 (Z=L) kg

- Maximum pressure at port ③ recommend be limited to 210 bar, any technical questions, please feel free to consult with our sales dept.
- Pressure at port ④ is directly additive to the setting of the valve.

UNIT:mm

Illustrations / detail are for reference only. Data subject to change.



X

OPERATION

4M

Normally open between Ports ② and ③; shifts to all ports blocked when piloted from Port ①

- Maximum Leakage Approximately (25 cc/min./70 bar)

Y

PRESSURE SETTING

A 35 - 210 bar (70 bar Standard Setting)

B 3.5 - 105 bar (14 bar Standard Setting)

D 1.7 - 55 bar (14 bar Standard Setting)

E 1.7 - 28 bar (14 bar Standard Setting)

S 1.7 - 14 bar (7 bar Standard Setting)

W 50 - 315 bar (70 bar Standard Setting)

Z

OPTIONS

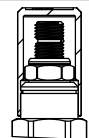
L

Leakproof hex. socket screw.



CB

Plastic Tamper Resistant Cover (Order Code:5JAA093)



K

Handknob with Lock Knob. (Order Code: 6ZAK001)

