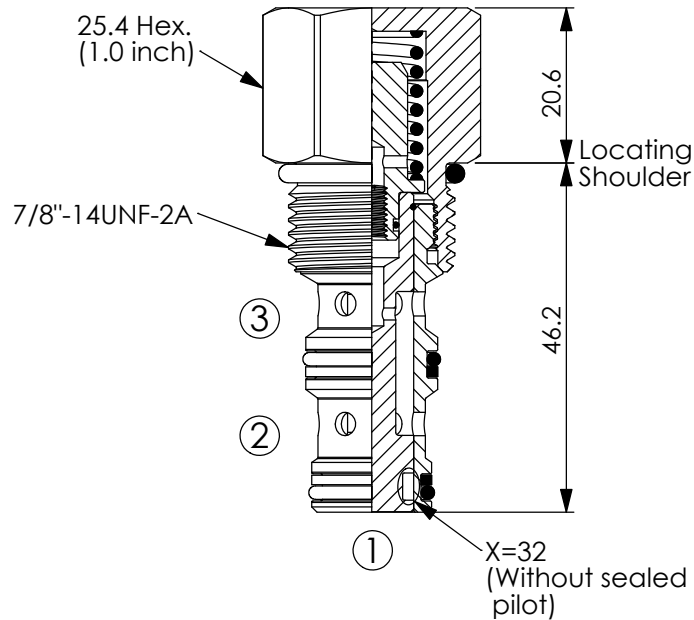


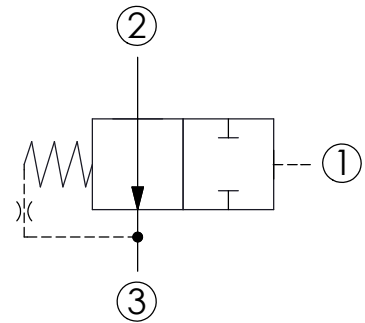
## DIRECTIONAL VALVE (Piloted 2-Position 2-Way Spool, Normally Open, Internal Vent)

Ordering Code: **DD-10W-X-Y-Z**



UNIT:mm

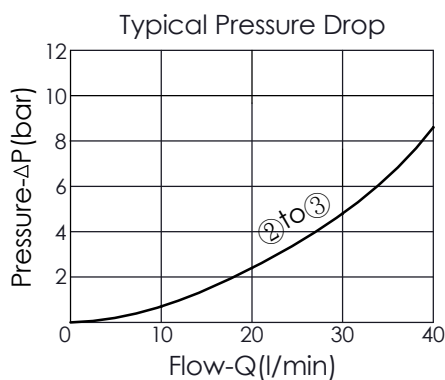
Illustrations / detail are  
for reference only.  
Data subject to change.



### TECHNICAL DATA

Max. pressure:	350	bar
Rated flow:	40	l/min
Cavity-Tooling:	10W-3	
Installation torque:	35 - 45	Nm
Weight:	0.141	kg

- Pressure of port ① must higher than port ③ plus spring pressure when using port ③ to port ②. Or select DD-10W-33-**Y**-N.
- Back pressure of Port ③ will increase pilot pressure of Port ① at ratio 1:1, plus pressure of bias spring.



### X OPERATION

**32**

Normally Open  
(Port ① spool without  
sealed pilot)

**3B**

Normally Open  
(Port ① spool with  
sealed pilot)

- Maximum Leakage Approximately  
(82 cc/min./210 bar)

**Y**

### SPRINGS

Cracking pressure

**70**

7.0 bar

**100**

10.0 bar

**140**

14.0 bar

**Z**

### OPTIONS

**N**

Non-adjustable