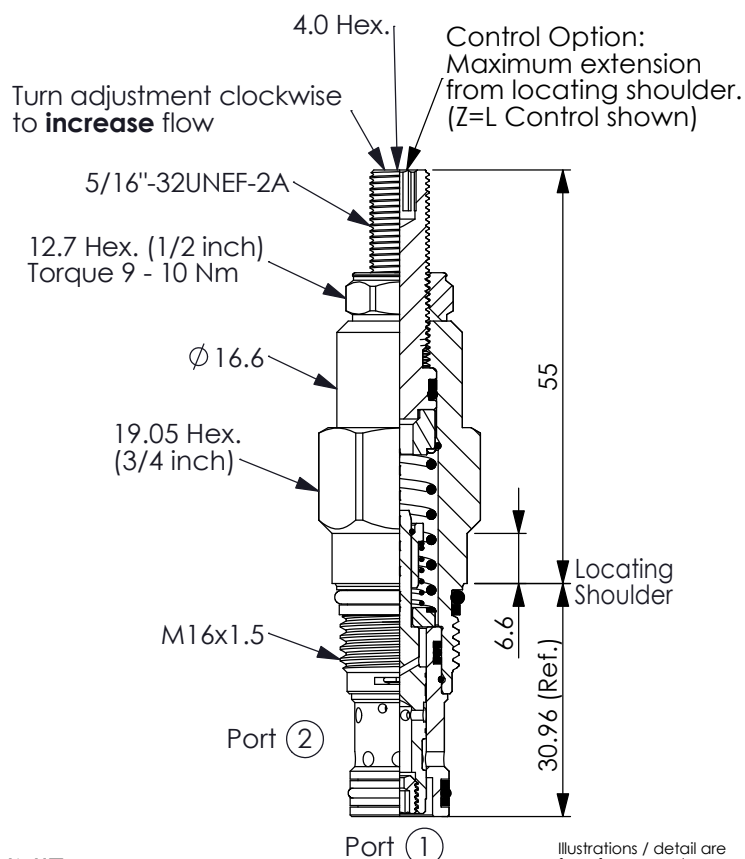


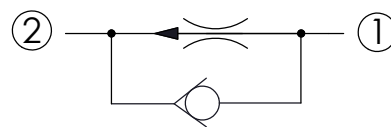
FLOW CONTROL VALVE (Fixed Orifice, Pressure Compensated, with Reverse Flow Check)

Ordering Code: **FR-162A-X-Y-Z**



UNIT:mm

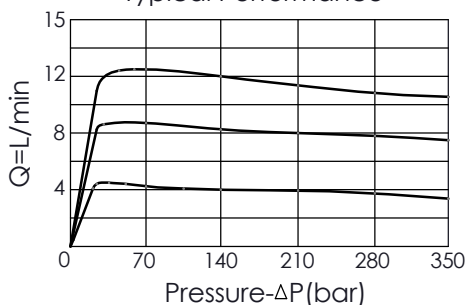
Illustrations / detail are for reference only. Data subject to change.



TECHNICAL DATA

| | | |
|--------------------------|----------|-------|
| Max. Operating pressure: | 350 | bar |
| Rated flow: | 0.4 - 11 | l/min |
| Cavity-Tooling: | 162A-2 | |
| Installation torque: | 27 - 33 | Nm |
| Weight: | 0.10 | kg |

Typical Performance



| Y | FLOW SETTING |
|------|--------------|
| 0040 | 0.4 LPM |
| 0100 | 1.0 LPM |
| 0110 | 1.1 LPM |
| 0300 | 3.0 LPM |
| 0400 | 4.0 LPM |
| 0600 | 6.0 LPM |
| 0800 | 8.0 LPM |
| 0900 | 9.0 LPM |
| 1000 | 10.0 LPM |

- Factory set flow ratings are within $\pm 15\%$ of the requested setting
- Customer must specify a flow rating
- If you need specific flow accuracy, please contact WINNER's sales department

X OPERATION

2C Fixed Setting, with Reverse Flow Check

Z OPTIONS

L Leakproof hex. socket screw. (Adjustment Ranges Approx. $\pm 20\%$)



K Handknob with Lock Knob. (Order Code: 7ZAK001)

