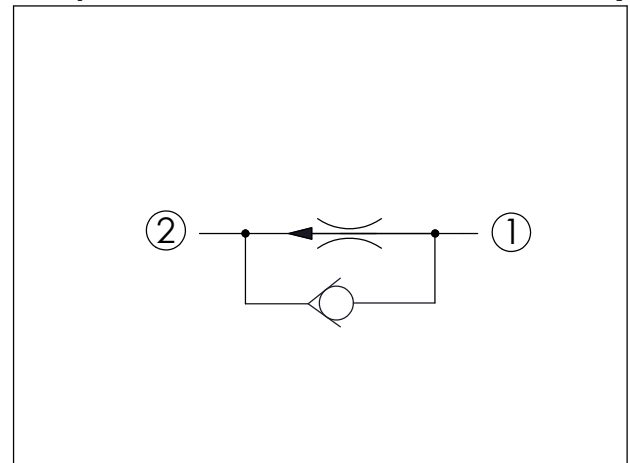
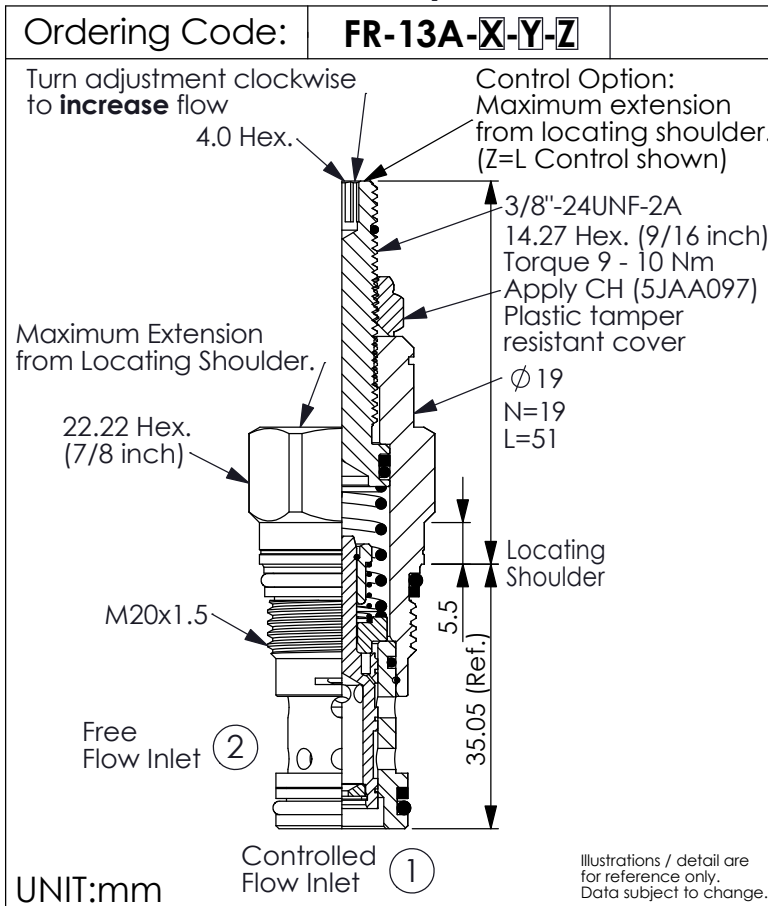
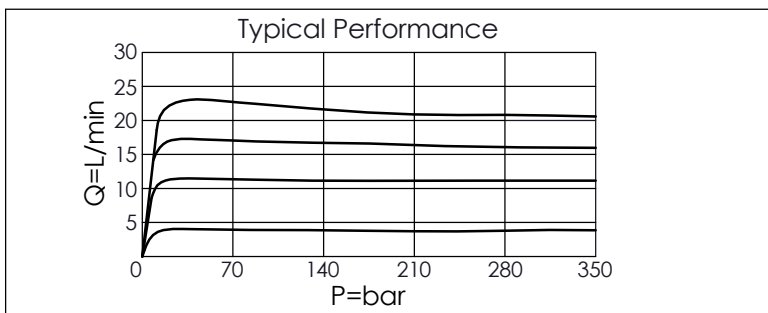


## FLOW CONTROL VALVE (Fixed Orifice, Pressure Compensated, with Reverse Flow Check)



### TECHNICAL DATA

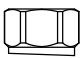

Max. Operating pressure:	350 bar
Rated flow:	0.4 - 23 l/min
Cavity-Tooling:	13A-2
Installation torque:	40 - 50 Nm
Weight:	0.10 (Z=N) 0.14 (Z=L) kg



Y	FLOW SETTING
0040	0.4 LPM
0150	1.5 LPM
0200	2.0 LPM
0240	2.4 LPM
0400	4.0 LPM
1000	10.0 LPM
1050	10.5 LPM
1300	13.0 LPM
1500	15.0 LPM
1800	18.0 LPM
2300	23.0 LPM

- Factory set flow ratings are within  $\pm 10\%$  of the requested setting
- Customer must specify a flow rating
- If you need specific flow accuracy, please contact WINNER's sales department

X	OPERATION
2C	Fixed Setting, with Reverse Flow Check

Z	OPTIONS
N	Non-adjustable 
L	Leakproof hex. socket screw. (Adjustment Ranges Approx. $\pm 25\%$ ) 
K	Handknob with Lock Knob. (Order Code: 6ZAK001) 