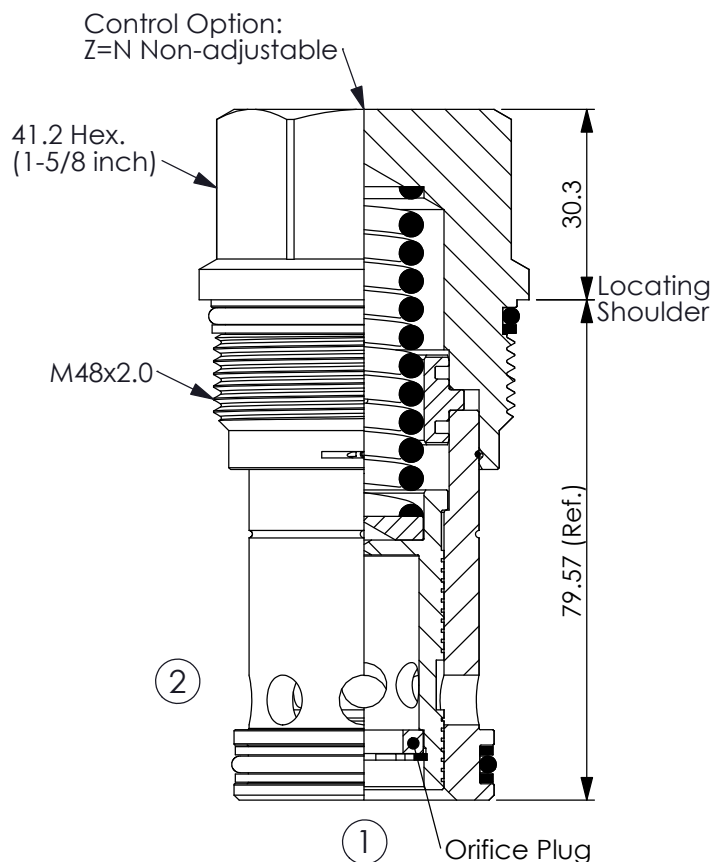
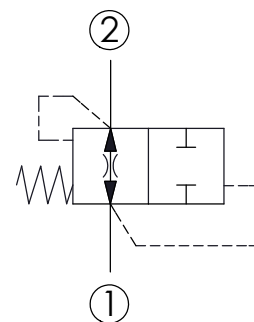


Ordering Code: **HB-18A-X-Y-Z**



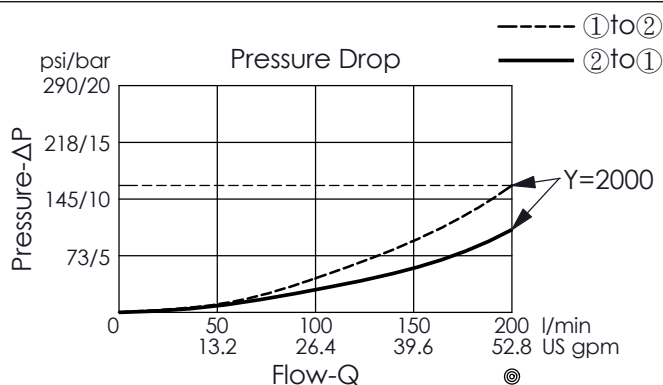
UNIT:mm

Illustrations / detail are  
for reference only.  
Data subject to change.



### TECHNICAL DATA

Max.Operating pressure:	350	bar
Rated flow:	4 - 200	l/min
Cavity-Tooling:	18A-2	
Installation torque:	465 - 500	Nm
Weight:	0.915	kg



**X**

### OPERATION

**20**

Standard Type

- Maximum Leakage Approximately (80 cc/min./70 bar)
- The valve is designed to protect against hose break. When hose breaks, the flow from port ① to port ② increases. The valve closes when reaches the setting of the valve.

**Y**

### FLOW SETTING (Port ① to Port ②)

<b>0500</b>	50 LPM	
<b>1000</b>	100 LPM	
<b>2000</b>	200 LPM	

- Factory set flow ratings are within +/- 10% of the requested setting.
- The flow setting has to be at least 25% bigger than the maximum flow of customer's system, customer must specify the flow setting when ordering the valve, our recommendation is 1.5 times of normal using flow.

**Z**

### OPTIONS

**N**

Non-adjustable

