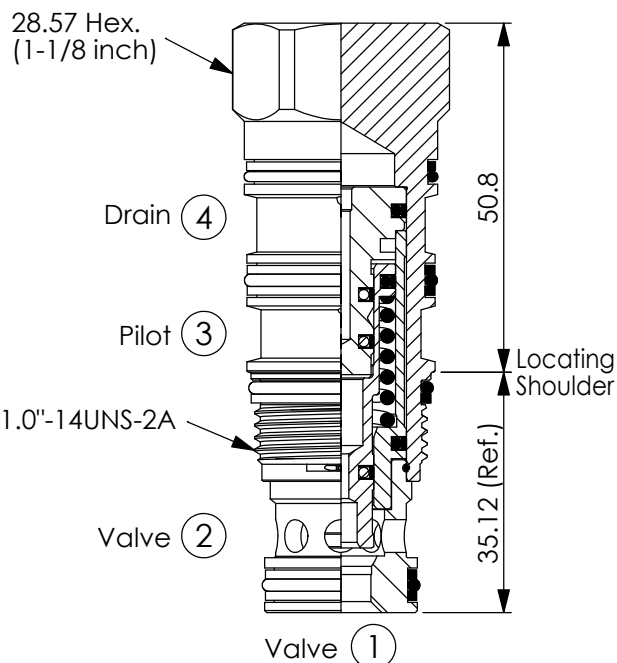
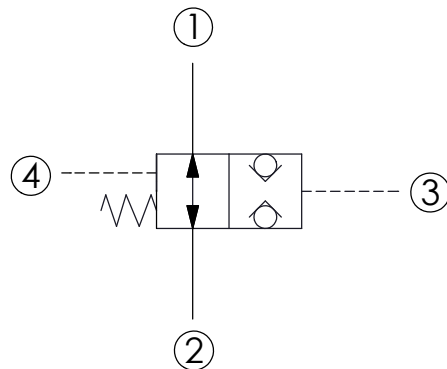


Ordering Code: **LN-22A-X-Y-Z**



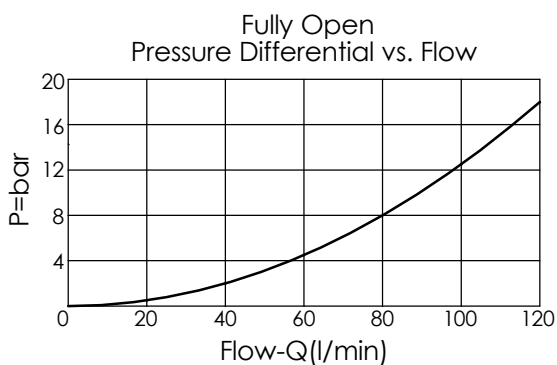
UNIT:mm

Illustrations / detail are for reference only. Data subject to change.



TECHNICAL DATA

Max. Operating pressure:	350	bar
Rated flow:	120	l/min
Cavity-Tooling:	22A-4	
Installation torque:	60 - 70	Nm
Weight:	0.28	kg



X OPERATION

4S Pilot-to-closed

- Maximum Leakage Approximately (0.7 cc/min.)
- All ports will accept 350 bar.

Y

SPRINGS

Recommendation of Minimum Pilot Pressure Required to Shift Valve (Port ③)

20

20.0 bar

• We suggest that using above 20 bar pilot pressure at Port ③ when Port ① and Port ② are 350 bar. In order to ensure shifting quickly for every kinds of pressure and flow.

Z

OPTIONS

N

Non-adjustable

NP

Non-adjustable With stainless steel external metal components (Buna-N Seal)