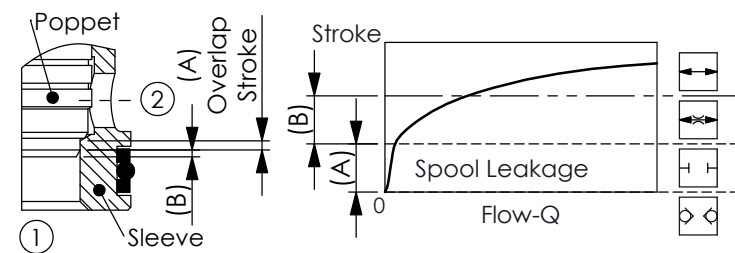
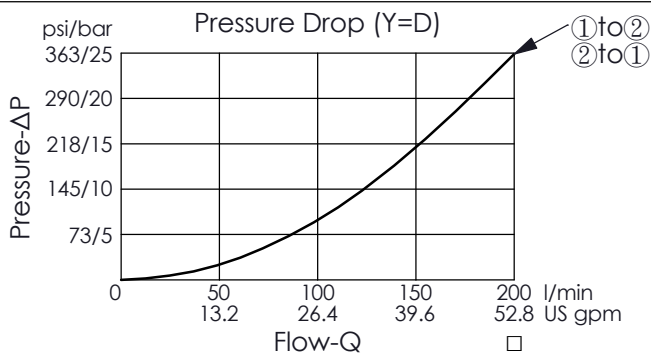
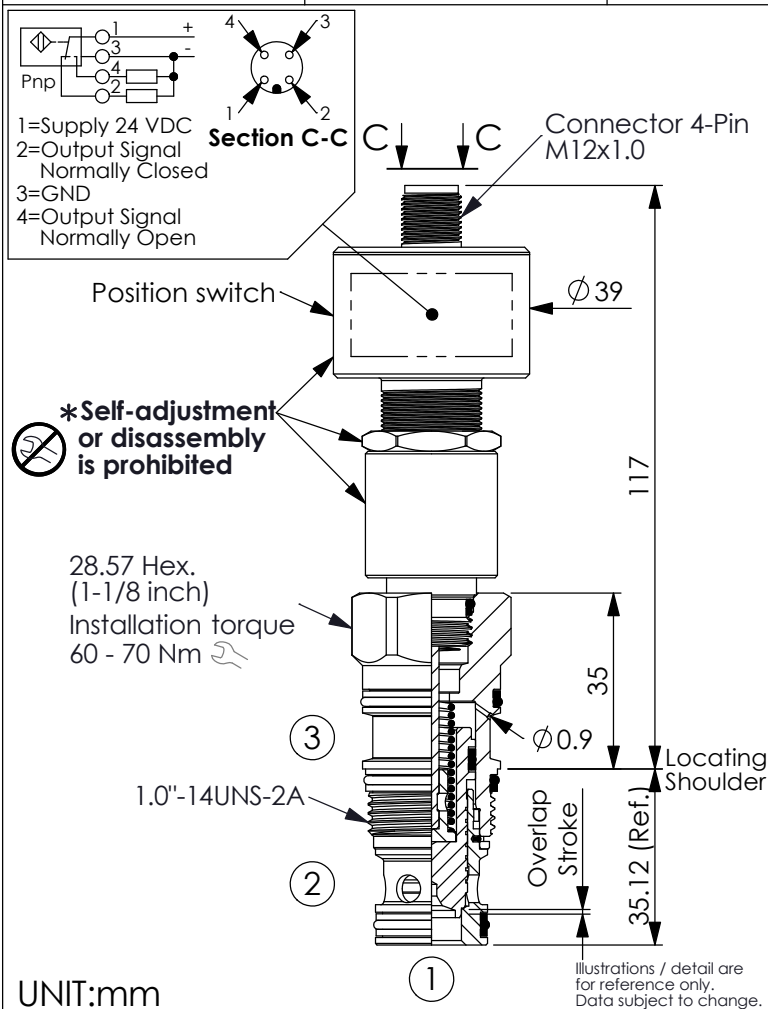
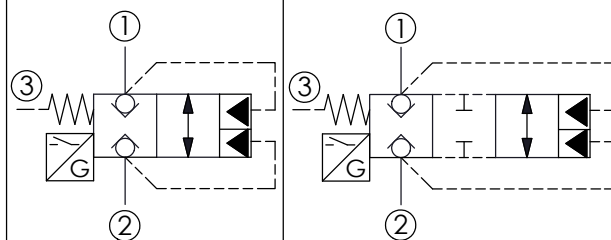


Ordering Code: **LOS-2A-X-Y-Z**



Y	SPRINGS	
	Cracking pressure	
D	3.5 bar at port ① (Standard)	

TRANSITION:



### TECHNICAL DATA

Max. Operating pressure:	350 bar
Rated flow:	200 l/min
Cavity-Tooling:	2A-3
Installation torque:	60 - 70 Nm
Weight:	0.413 kg
<ul style="list-style-type: none"> <li>Area ratio:A3 to A1 = 1.8:1</li> <li>Area ratio:A3 to A2 = 2.25:1</li> <li>With Sealed Piston.</li> <li>All ports will accept 350 bar.</li> </ul>	

### POSITION SWITCH DATA

Supply Voltage:	24 VDC (20 - 30 VDC)
Maximum Output Load:	400 mA (Duty Cycle 100%)
Operating Temperature Range:	-25 to 80 °C
Thermal Shift:	≤±0.1 mm (0 to 80 °C)
Turn On Time:	≤ 25 ms
Connector:	M12x1.0 (4-Pin)
Connector Environment Rating:	IP65
EMC:	DIN EN 61000-6-1/2/3/4
<ul style="list-style-type: none"> <li>Position switch is <b>CE</b> approved.</li> <li>With reverse polarity protection and short circuit protection.</li> <li>The opening and closing of the valve are confirmed by a signal from the position switch.</li> </ul>	

X	OPERATION	
3C	Spring biased closed Port ③ pilot source	
<ul style="list-style-type: none"> <li>Maximum Leakage Approximately (0.07 cc/min./70 bar)</li> <li>Maximum Transition Leakage Approximately (30 cc/min./70 bar)</li> </ul>		

Z	OPTION	
N	Standard	