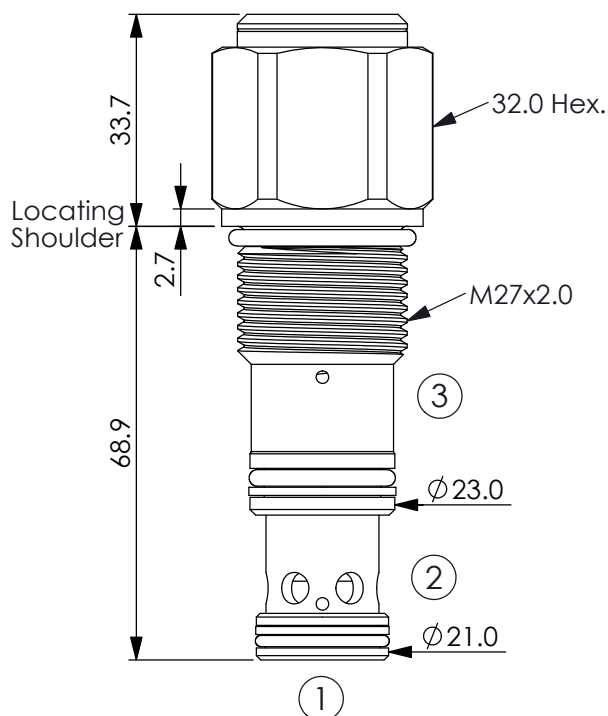


LOGIC ELEMENT VALVE (Spool Type, Normally Open, Downstream Pressure Compensated)

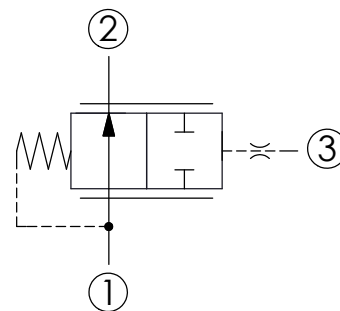
Ordering Code: **LP-27MC-X-Y-Z-05**



UNIT:mm

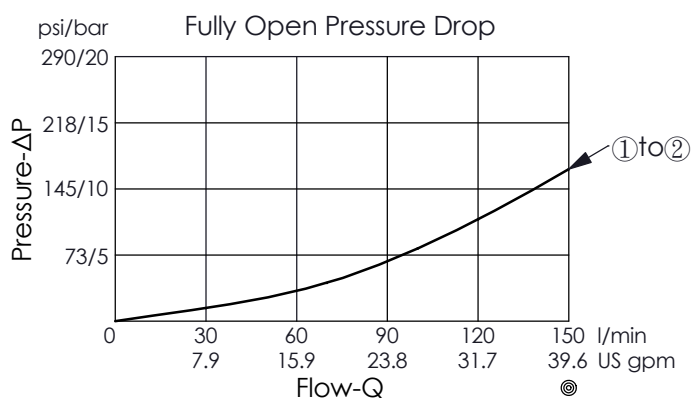
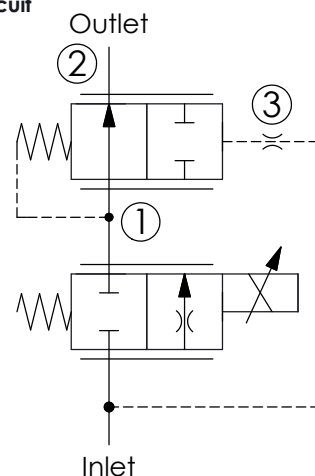
Illustrations / detail are for reference only.
Data subject to change.

X=36



Example: Downstream pressure compensated proportional flow control circuit

X=36



TECHNICAL DATA

Max. Operating pressure: 250 bar

Rated flow: 150 l/min
(Refer to performance chart)

Cavity-Tooling: 27MC-3

Installation torque: 50 - 60 Nm

Weight: 0.353 kg

X

OPERATION

36

Normally Open,
Port ① to Port ②, Port ③ Pilot,
Downstream Pressure
Compensated

SPRINGS

Cracking pressure

50

5.0 bar

70

7.0 bar

100

10.0 bar

140

14.0 bar

Z

OPTION

N

Non-adjustable