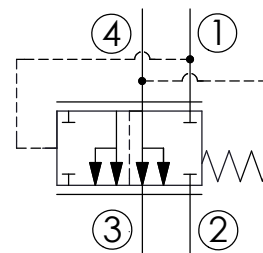
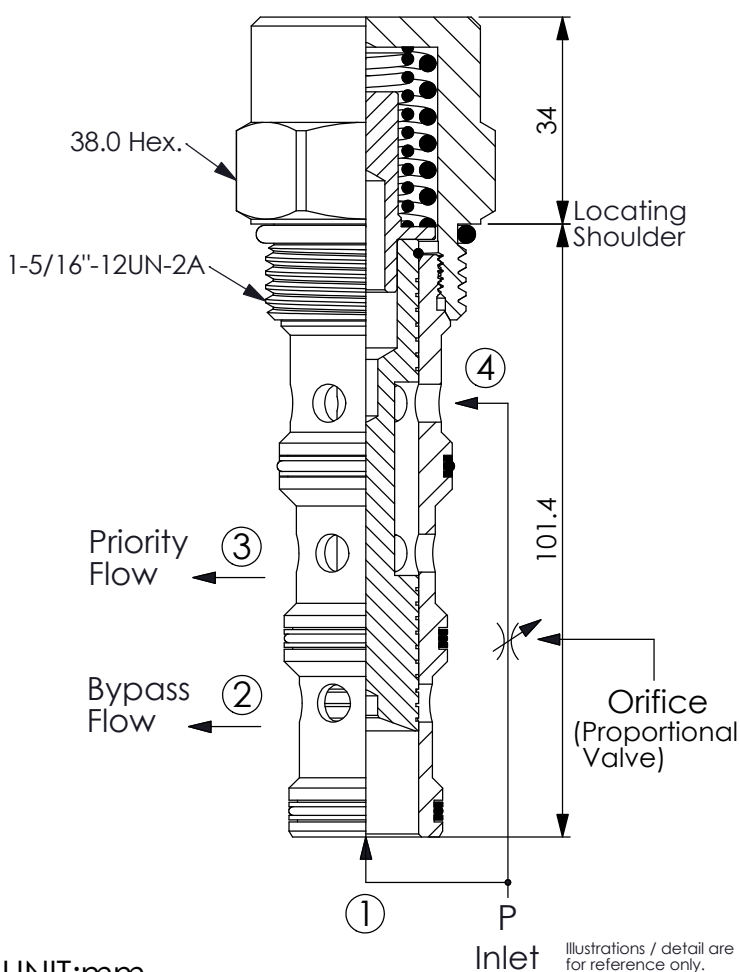
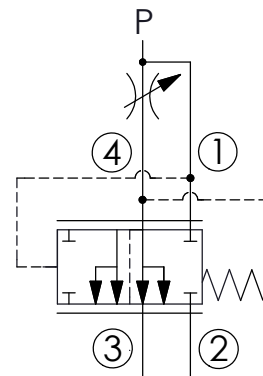


Ordering Code: **LR-16W-X-Y-Z**

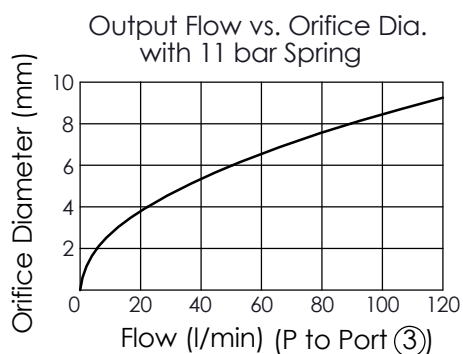


Example: Application Example



TECHNICAL DATA

| | | |
|----------------------|---------|-------|
| Max. pressure: | 240 | bar |
| Rated flow: | 100 | l/min |
| Cavity-Tooling: | 16W-4 | |
| Installation torque: | 60 - 70 | Nm |
| Weight: | 0.558 | kg |



SPRINGS

Cracking pressure

55 5.5 bar

76 7.6 bar

110 11.0 bar

· If other pressure spring is needed, please consult our sales department.

X

OPERATION

40

Pressure compensator is behind a remote fixed or variable orifice

Z

OPTION

N

Non-adjustable