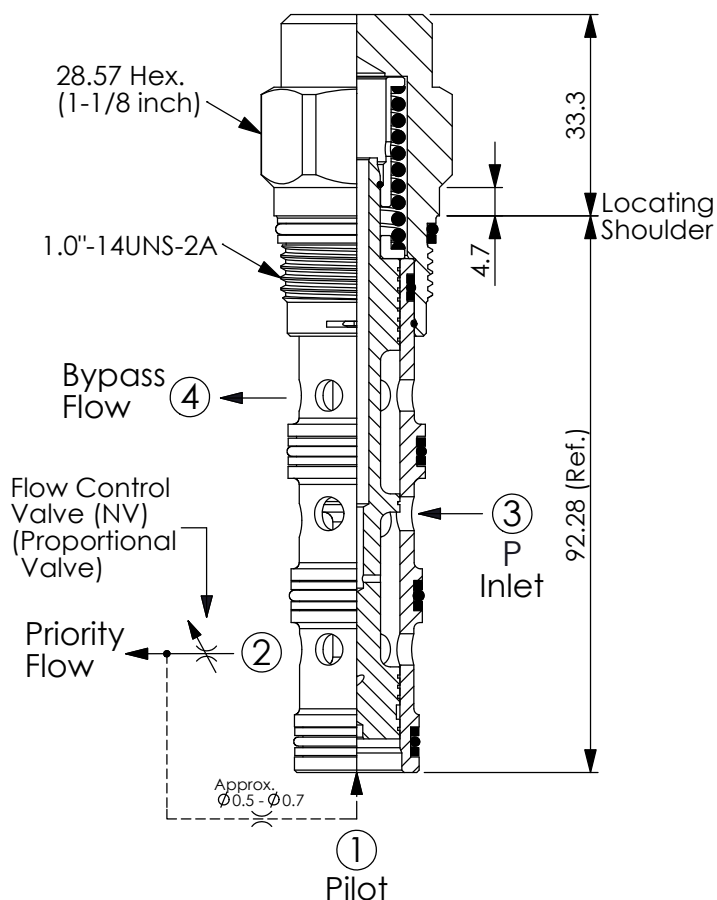
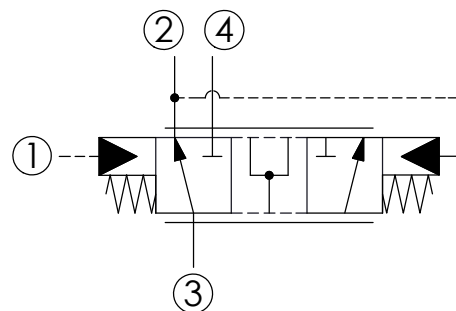


Ordering Code: **LR-32A-X-Y-Z**

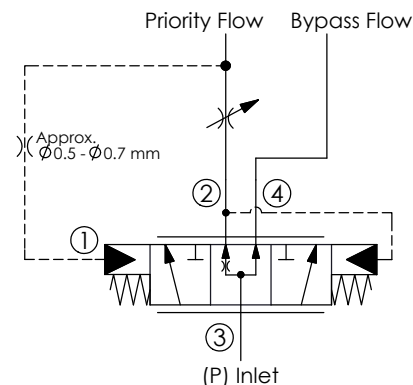


UNIT:mm

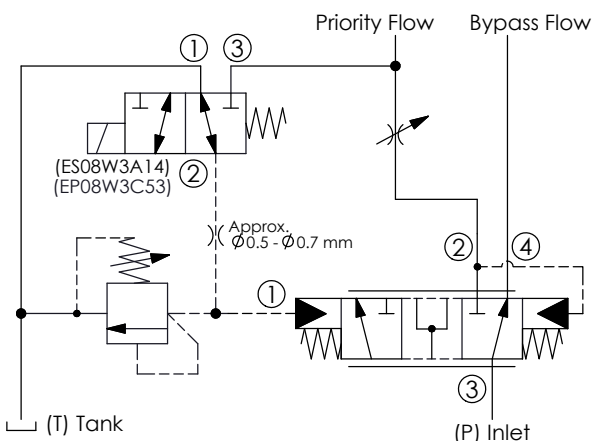
Illustrations / detail are for reference only. Data subject to change.



Example: Application Example



Example: Application Example



TECHNICAL DATA

Max. Operating pressure:	350	bar
Rated flow:	120	l/min
(Priority rated flow:	90	l/min)
Cavity-Tooling:	32A-4	
Installation torque:	60 - 70	Nm
Weight:	0.304	kg

X	OPERATION
41	Pilot at Port ①

Y	SPRINGS
	Differential pressure (ΔP)
50	5.0 bar
70	7.0 bar

Z	OPTIONS
N	Non-adjustable