

Ordering Code: **MB-19A-X-Y-Z**

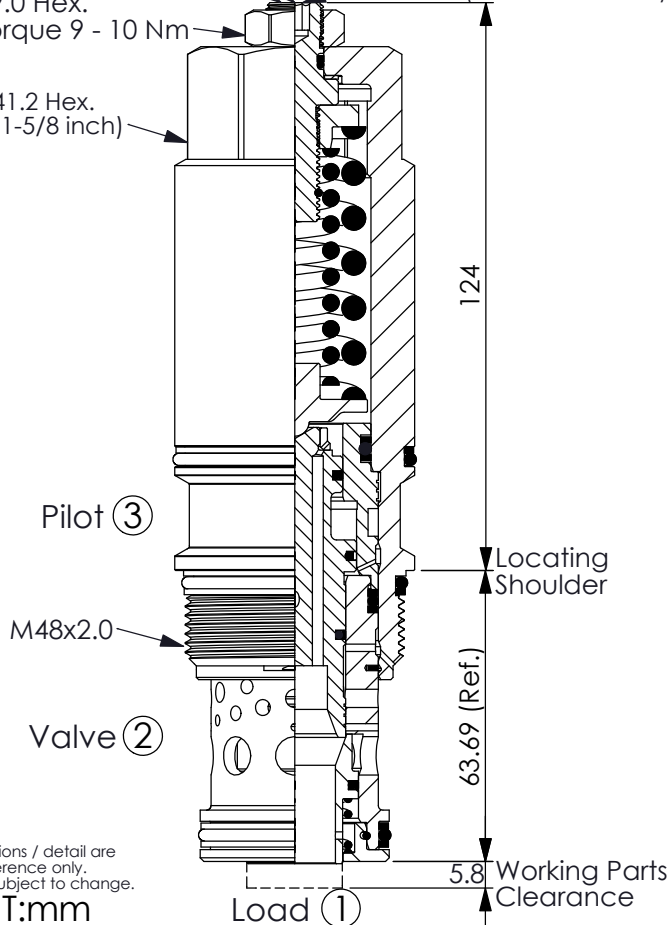
Turn screw clockwise
to reduce setting and
release load.

19.0 Hex.
Torque 9 - 10 Nm

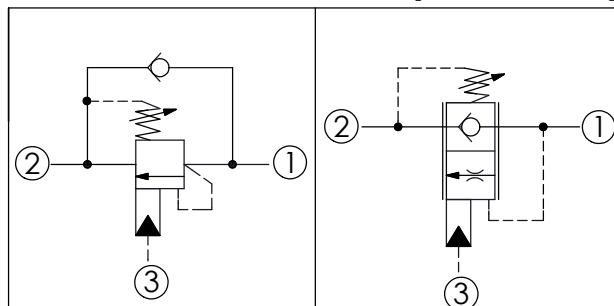
41.2 Hex.
(1-5/8 inch)

5.55 Hex. (7/32 inch)

Control Option:
Maximum extension
from locating shoulder.
(Z=L Control shown)



Illustrations / detail are
for reference only.
Data subject to change.



TECHNICAL DATA

Max. Setting:	350	bar
Rated flow:	480	l/min
Cavity-Tooling:	19A-3 (19AB-3)	
Installation torque:	465 - 500	Nm
Weight:	1.90	kg

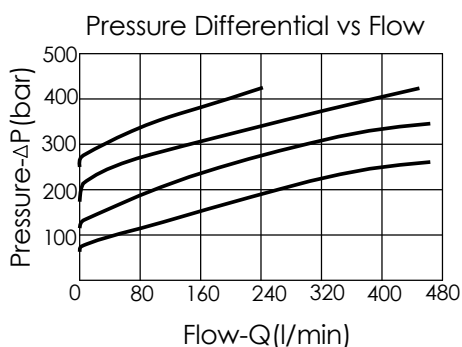
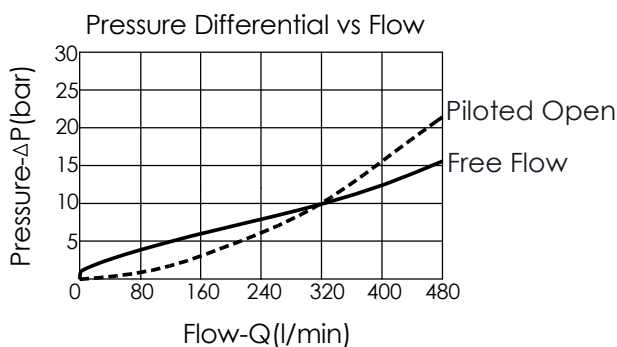
Pressure Setting:

Setting should be 1.3 times maximum load induced pressure.
(We suggest when the Max. setting pressure is 350 bar, the load pressure has to be lower than 260 bar.)

This valve is functionally a 3 ports counterbalance valve (CB). It seats as a poppet valve and modulates as a spool valve.

X	PILOT RATIO (with sealed pilot)	
3A	1.5 : 1	
3C	3 : 1	
3D	4.5 : 1	

· Maximum Leakage (0.3 cc/min.)



SPRINGS

Y	ADJUSTMENT RANGES (1.7 bar Cracking Pressure)	
H	70 - 280 bar (210 bar Standard Setting)	
J	140 - 350 bar (210 bar Standard Setting)	
*F	140 - 420 bar Max. Setting (350 bar Standard Setting) (Specified factory setting pressure range must be 350 - 420 bar)	
I	25 - 105 bar (70 bar Standard Setting)	

* Any technical questions, please feel free to consult with our sales dept.

Z	OPTIONS	
L	Leakproof hex. socket screw.	
LP	Leakproof hex. socket screw. With Stainless Steel external metal components	