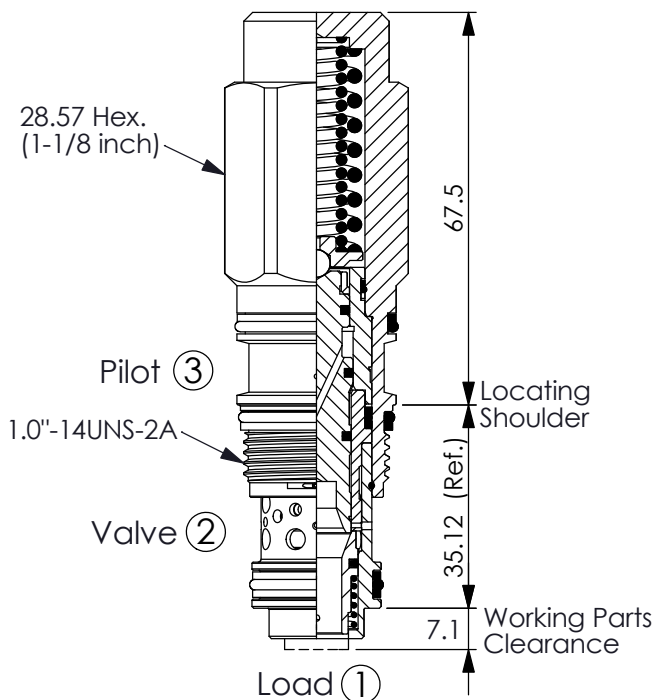


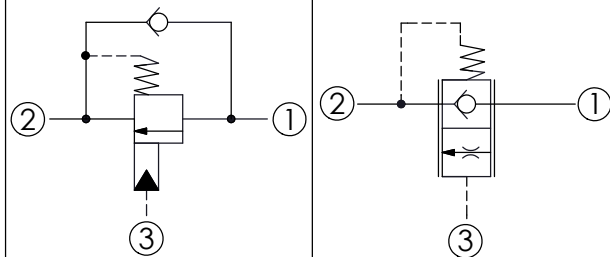
LOAD REACTIVE, LOAD CONTROL VALVE (Fixed Setting, Non-Vented)

Ordering Code: **MB-2A-X-Y-Z**



UNIT:mm

Illustrations / detail are for reference only. Data subject to change.



TECHNICAL DATA

Max. Operating pressure: 350 bar

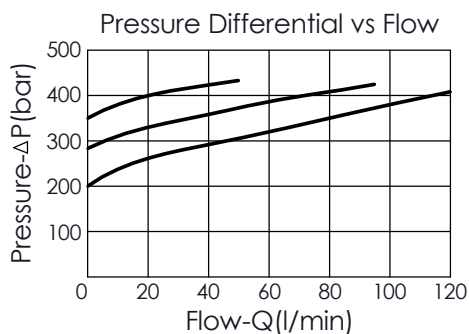
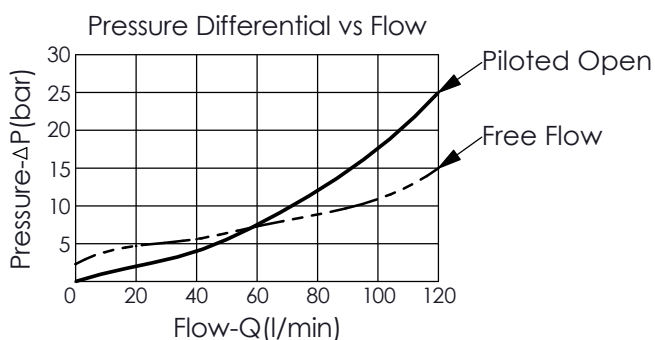
Rated flow: 120 l/min

Cavity-Tooling: 2A-3

Installation torque: 60 - 70 Nm

Weight: 0.353 kg

This valve is functionally a 3 ports counterbalance valve (CB). It seats as a poppet valve and modulates as a spool valve.



X PILOT RATIO

3A 1.5 : 1 (with sealed pilot)

• Maximum Leakage (0.3 cc/min.)

Y SPRINGS

ADJUSTMENT RANGES
(1.7 bar Cracking Pressure)

310 290 - 330 bar

Z OPTIONS

N Not Adjustable