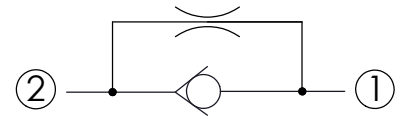
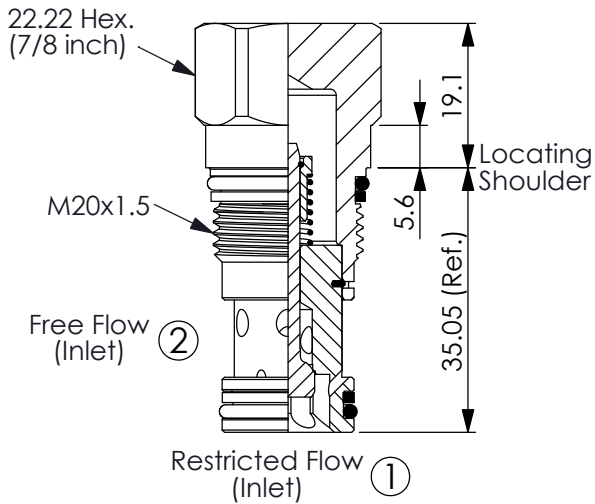


Ordering Code: **NC-13A-X-Y-N-Z**



TECHNICAL DATA

Max. operating pressure: 350 bar
(Refer To Performance Chart)

Rated flow: 60 l/min
(Refer To Performance Chart)

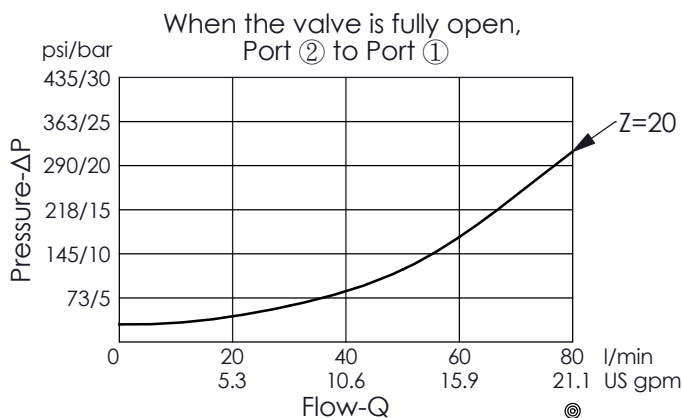
Cavity-Tooling: 13A-2

Installation torque: 40 - 50 Nm

Weight: 0.095 kg

UNIT:mm

Illustrations / detail are for reference only. Data subject to change.



X OPERATION

21 ② to ① (Free Flow)

Z SPRINGS

Cracking pressure

20 2.0 bar

Y

OPTIONS

Maximum Nominal Orifice (Port ① to Port ②)

23 ϕ 2.3 mm

16 ϕ 1.6 mm

- Orifice Range: ϕ 0.4 - ϕ 3.9 mm
- Refer to T.101.106.E Technical Information : ORIFICE VS. PRESSURE DROP CURVES CHART