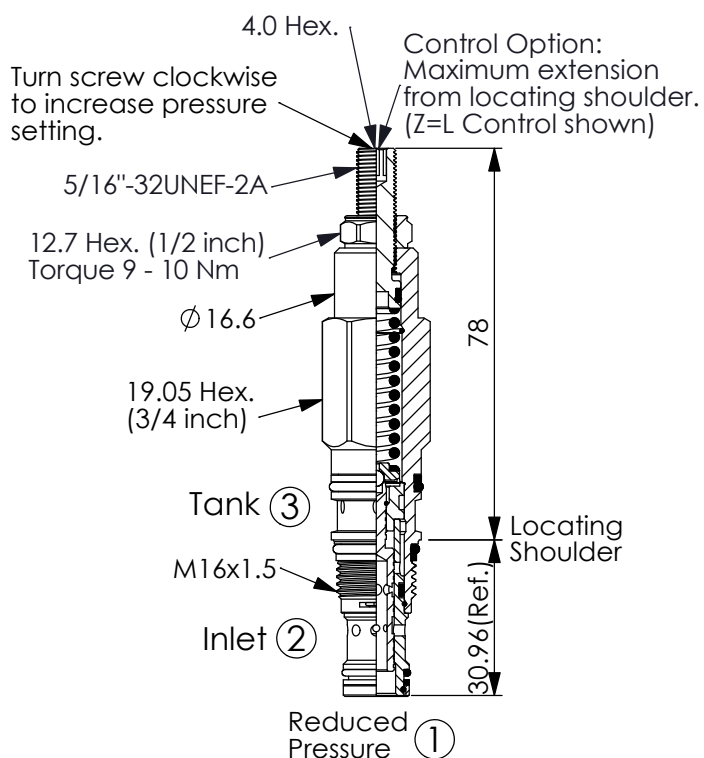


REDUCING VALVE (Restrictive Compensator, Direct Acting)

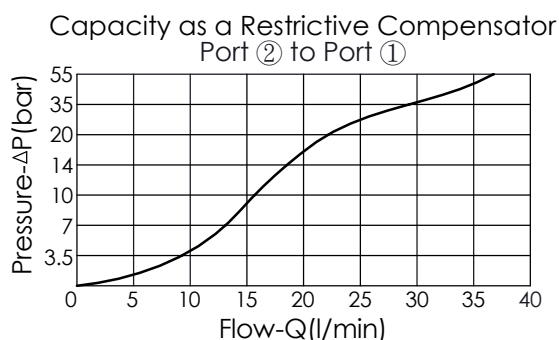
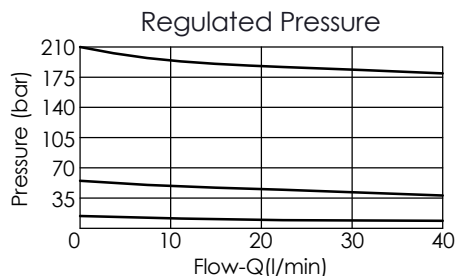
Ordering Code: **PD-163A-X-Y-Z**



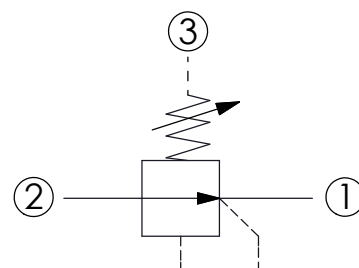
UNIT:mm

Illustrations / detail are for reference only.
Data subject to change.

Performance Chart



Y	SPRINGS	
	ADJUSTMENT RANGES	
A	35 - 210 bar	(50 bar Standard Setting)
B	3.5 - 105 bar	(14 bar Standard Setting)
D	1.7 - 55 bar	(14 bar Standard Setting)
E	1.7 - 28 bar	(14 bar Standard Setting)
S	1.7 - 14 bar	(7 bar Standard Setting)
W	50 - 315 bar	(70 bar Standard Setting)



TECHNICAL DATA

Max. Operating pressure:	350	bar
Rated flow:	20	l/min
(Refer to performance chart)		
Cavity-Tooling:	163A-3	
Installation torque:	27 - 33	Nm
Weight:	0.130 (Z=L)	kg

X OPERATION

3J Without Relief function

- Maximum Leakage Approximately (30 cc/min./70 bar)
- Please pay attention when using this valve in a dead-head application (no flow from port ① to port ②) because it is without relieving function. The pressure may continue increase obviously because of the very low leakage at the reduced pressure side of the circuit. The pressure at port ① will not stop at the pressure setting of the spring, it will gradually increase toward port ② according to the flow.
- When the pressure drop of LP-* -30 is 14 bar, the orifice is not able to satisfy customer's demand for big flow. We suggest choosing PD-* -3J, which has bigger orifice and is able to be adjusted to higher pressure drop to get bigger flow pass through.

Z OPTIONS

L	Leakproof hex. socket screw.		
C	Stainless Steel Tamper Resistant Cover.		
K	Handknob with Lock Knob. (Order Code: 7ZAK001)		