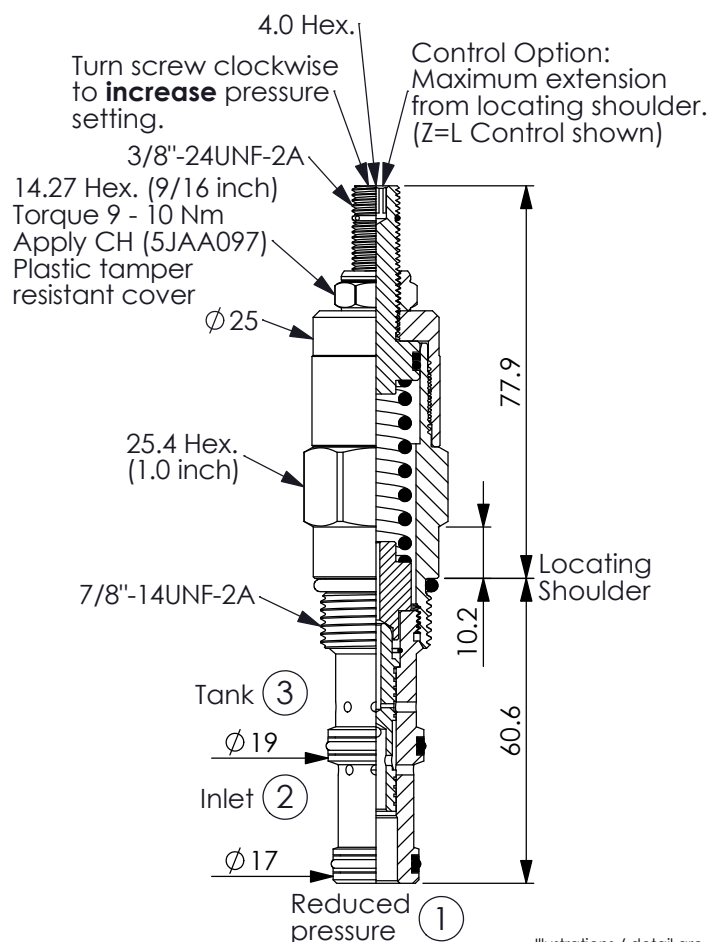
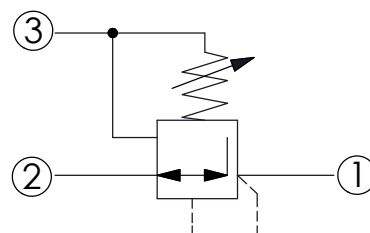


Ordering Code: **PD-10WD-X-Y-Z**



UNIT:mm

Illustrations / detail are for reference only. Data subject to change.



### TECHNICAL DATA

Max. Operating pressure: 350 bar

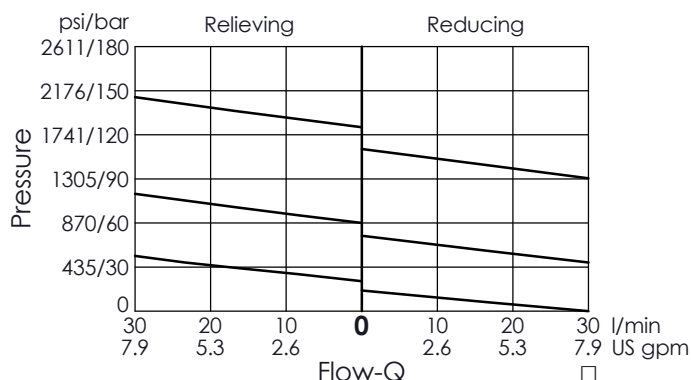
Rated flow: 30 l/min

Cavity-Tooling: 10WD-3

Installation torque: 35 - 45 Nm

Weight: 0.267 (Z=L) kg

- This valve is direct-acting structure and contamination proof.
- Input pressure up to 350 bar are available for all spring options.



### X OPERATION

**3S** Direct-Acting  
High-Pressure Type

- Maximum Leakage Approximately (35 cc/min.)

### Y SPRINGS

#### ADJUSTMENT RANGES

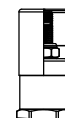
<b>B</b>	20 - 75 bar (35 bar Standard Setting)
<b>E</b>	5 - 25 bar (14 bar Standard Setting)
<b>K</b>	30 - 140 bar (70 bar Standard Setting)

### Z OPTIONS

**L** Leakproof hex. socket screw.



**C** Stainless Steel Tamper Resistant Cover.



**K** Handknob with Lock Knob.  
(Order Code: 6ZAK001)

