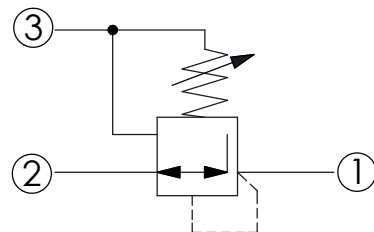
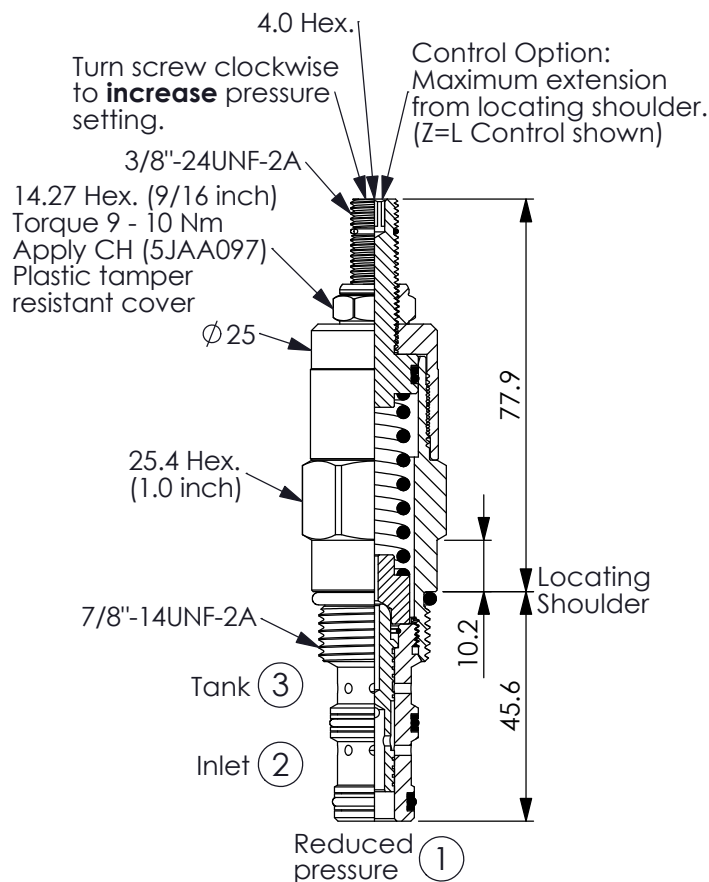


Ordering Code: **PD-10W-X-Y-Z**



TECHNICAL DATA

Max. Operating pressure: 350 bar

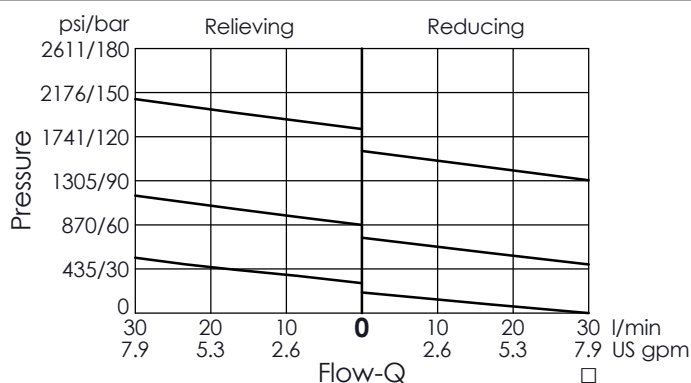
Rated flow: 30 l/min

Cavity-Tooling: 10W-3

Installation torque: 35 - 45 Nm

Weight: 0.244 (Z=L) kg

- This valve is direct-acting structure and contamination proof.
- Input pressure up to 350 bar are available for all spring options.



X OPERATION

3S Direct-Acting
High-Pressure Type

- Maximum Leakage Approximately (35 cc/min.)

Y SPRINGS

ADJUSTMENT RANGES

B 20 - 75 bar (35 bar Standard Setting)

E 5 - 25 bar (14 bar Standard Setting)

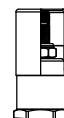
K 30 - 140 bar (70 bar Standard Setting)

Z OPTIONS

L Leakproof hex.
socket screw.



C Stainless Steel
Tamper Resistant
Cover.



K Handknob with
Lock Knob.
(Order Code: 6ZAK001)

