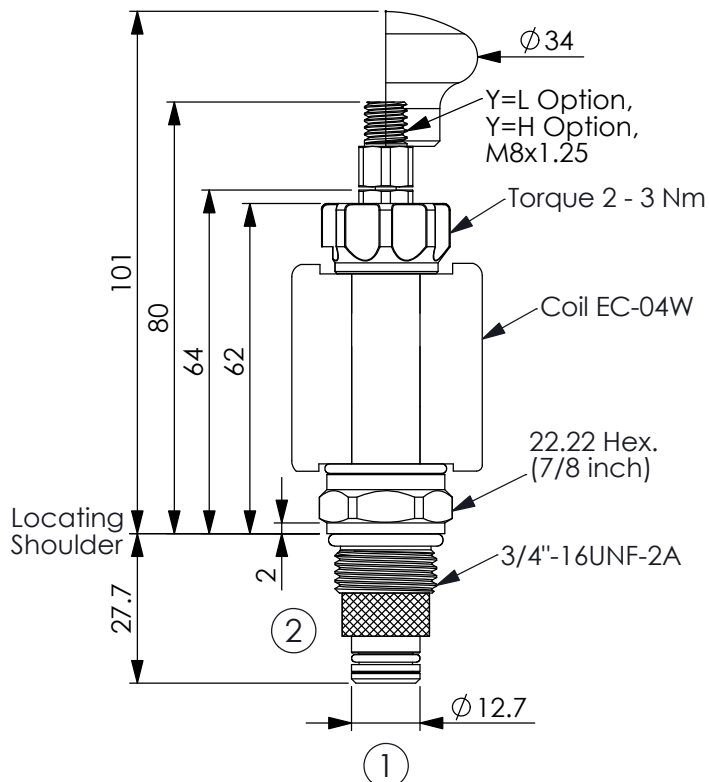


## FLOW CONTROL VALVE (Electro-Proportional, Normally Closed With Cable)

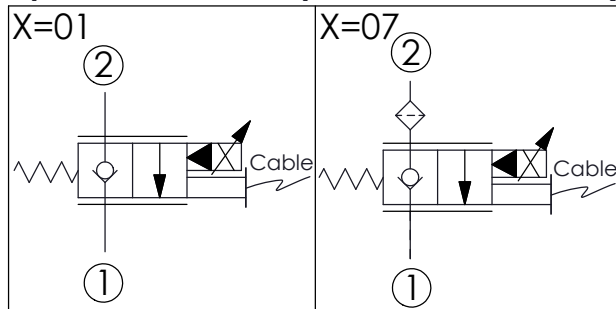
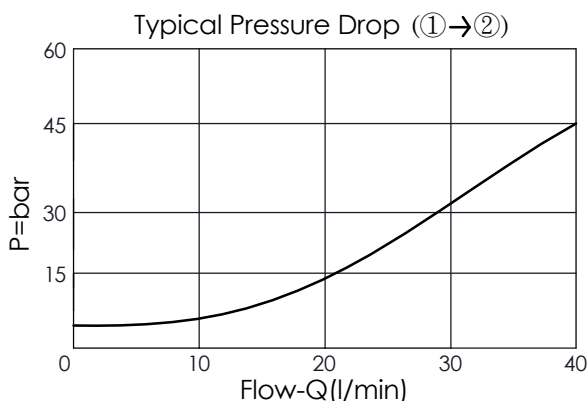
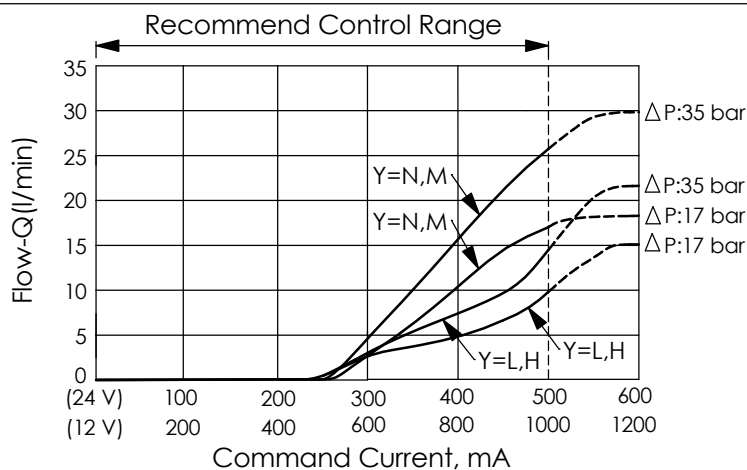
Ordering Code: **PEP-08W-2A-X-Y-Z**

Please note the pull force and without crooked direction.  
If you have any question, please contact Winner's sales department.



UNIT:mm

Illustrations / detail are for reference only.  
Data subject to change.



### TECHNICAL DATA

Max.Operating pressure:	250	bar
Rated flow:	22	l/min
Cavity-Tooling:	08W-2	
Installation torque:	25 - 35	Nm
Weight:(with Coil)	0.37	kg
(without Coil)	0.15	kg

Coils must be ordered separately  
Internal Leakage Approximately:  
0.15 cc/minute  
(5 drops/minute) max. at 250 bar

Continuous Duty Coils: Current(A)

Voltage(V)	Cold Coil	Hot Coil
12	1.66	1.06
24	0.88	0.53

### X STRUCTURE

01	Normally-Closed No Reverse Flow Energized
07	Normally-Closed With Filter No Reverse Flow Energized

### Y OPTIONS

N	Non-adjustable	
M	Manual Override	
L	Pull Style (Cable Operated) (M8x1.25)	
H	Pull Style (Hand Operated) (Suitable for M8x1.25)	

· If there are requirements other than thread of Y=L or Y=H, please contact the Winner sales department.

### Z FLOW

Z	NOMINAL CAPACITY	
0220	0 - 22 LPM	