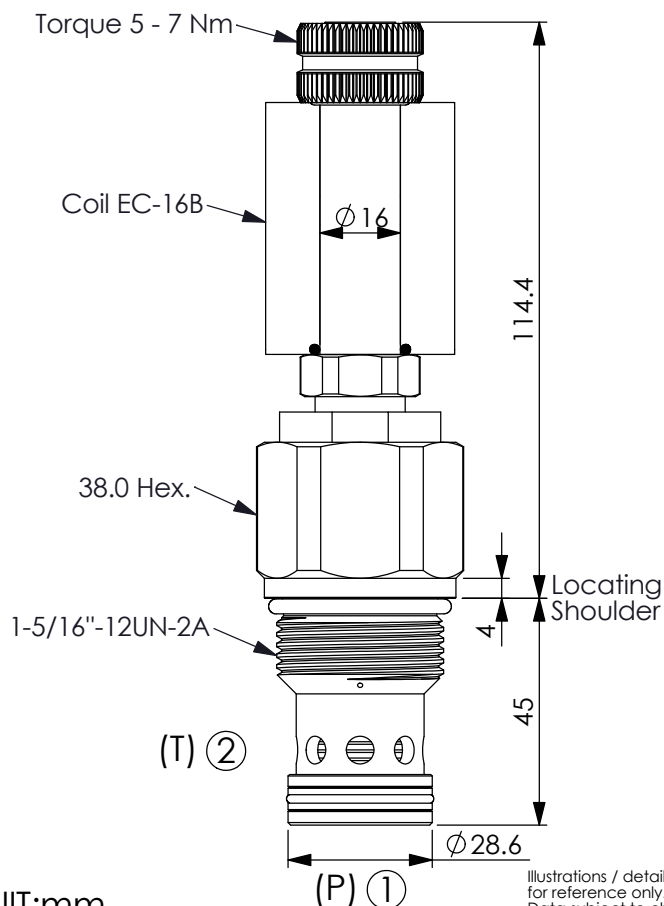


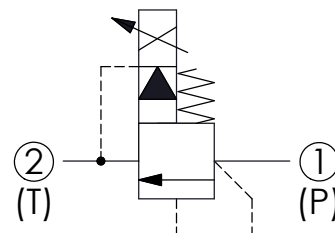
## PROPORTIONAL RELIEF VALVE (Pilot Operated Standard Balanced, Low Pressure with No Command)

Ordering Code: **PRP-16W-X-Y-Z-B1**



UNIT:mm

Illustrations / detail are for reference only. Data subject to change.

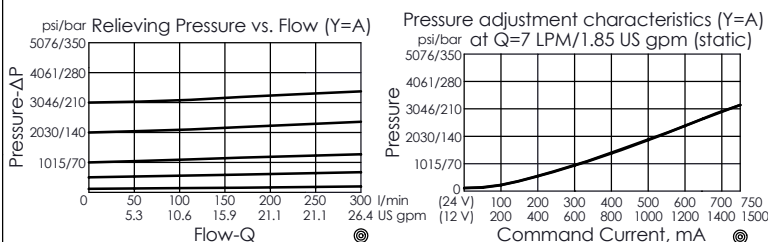


### TECHNICAL DATA

Max.Operating pressure:	350	bar
Rated flow:	300	l/min
Cavity-Tooling:	16W-2	
Installation torque:	80 - 100	Nm
Weight:	0.585	kg (Without Coil)

Coils must be ordered separately

- Maximum Leakage Approximately (66 cc/min./70 bar)
- Reseat exceeds 85% of cracking pressure
- Hysteresis with DC input < 8%
- Hysteresis with dither < 4%
- Linearity with dither < 2%
- Dither should be adjustable between 80 - 300 Hz (Recommended dither frequency 140 Hz)



### X OPERATION

**2C** 2 Ports · 26 Watt. Coil  
Ø 16 mm tube

### Y HIGH PRESSURE ADJUSTMENT RANGES (RECOMMEND PRESSURE RANGE)

Customer has to specify a relief setting that falls within the selected pressure range

<b>A</b>	20 - 210 bar
<b>B</b>	10.5 - 105 bar
<b>D</b>	3.5 - 50 bar
<b>W</b>	35 - 350 bar

• If pressure control beyond the range is required, please contact the Winner sales department.

### Z OPTIONS

**N** Non-adjustable

