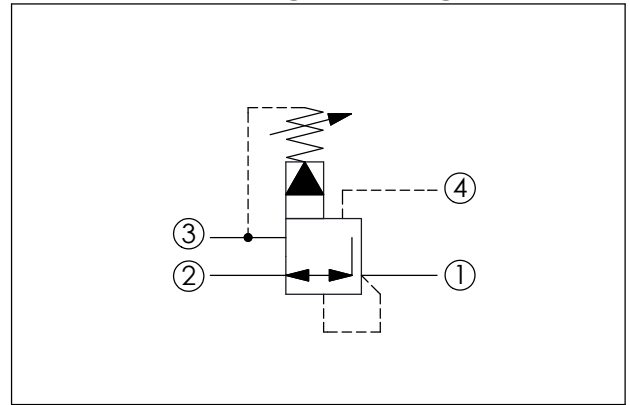
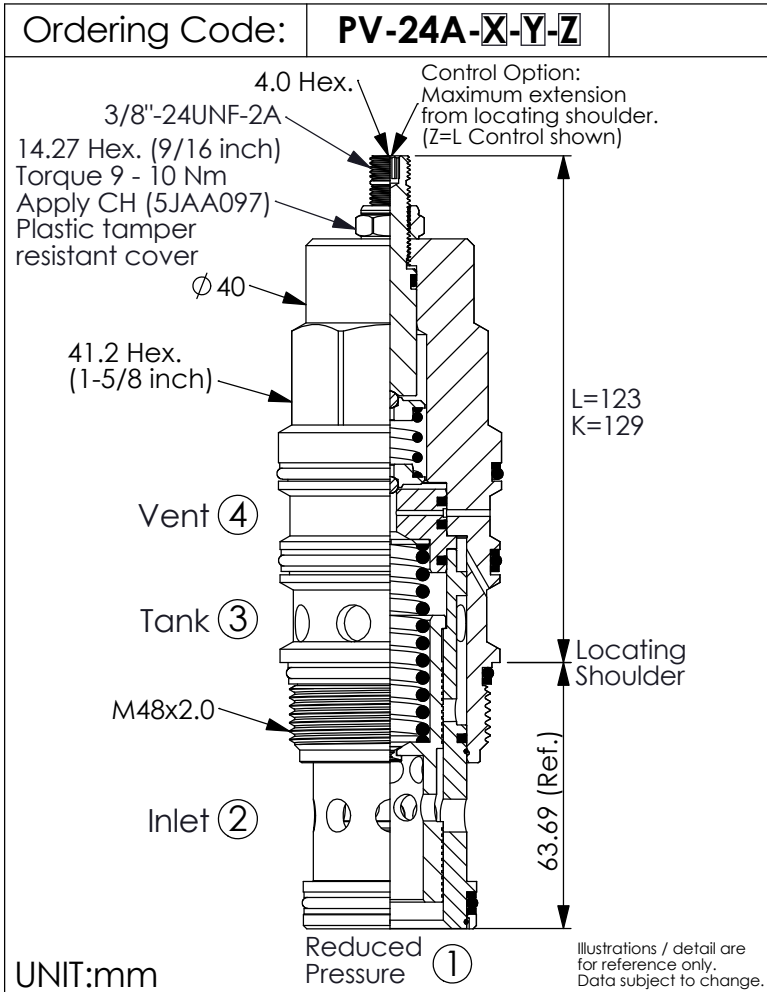
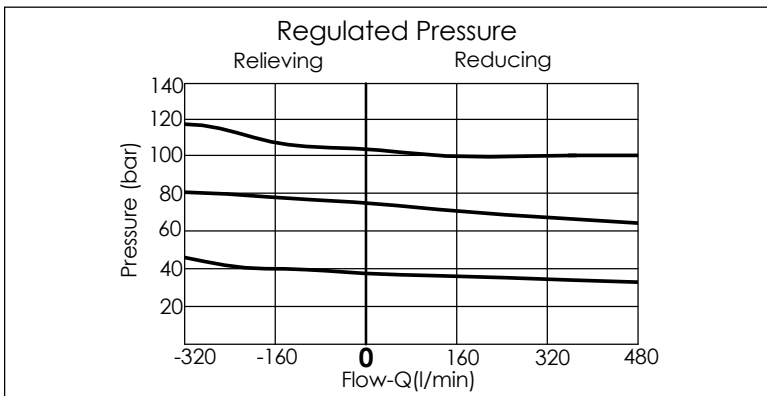


REDUCING/RELIEVING VALVE (Pilot Operated Reducing/Relieving, Ventable)



TECHNICAL DATA	
Max. Operating pressure:	350 bar
Rated flow:	320 l/min
Cavity-Tooling:	24A-4 (24AB-4)
Installation torque:	465 - 500 Nm
Weight:	1.60 (Z=L) kg
• Control Pilot Flow (0.25 - 0.33 L/min.)	

X	OPERATION	
40	Standard type Low leakage	
*43	Very good pressure control Improved dynamic response	
45	Impact resistant type Low leakage without filter	



Y	SPRINGS	
ADJUSTMENT RANGES (Recommended Differential Pressure) (X=40)(X=45)		
A	7 - 210 bar (14 bar Standard Setting)	Maximum Differential=210 bar
B	3.5 - 105 bar (14 bar Standard Setting)	Maximum Differential=210 bar
C	10.5 - 420 bar (14 bar Standard Setting)	test at 420 bar inlet pressure
D	1.7 - 55 bar (14 bar Standard Setting)	Maximum Differential=140 bar
E	1.7 - 28 bar (14 bar Standard Setting)	Maximum Differential=140 bar
H	2 - 210 bar (14 bar Standard Setting)	Maximum Differential=210 bar
J	1.7 - 105 bar (14 bar Standard Setting)	Maximum Differential=140 bar
N	4 - 55 bar (14 bar Standard Setting)	Maximum Differential=210 bar
Q	4 - 28 bar (14 bar Standard Setting)	Maximum Differential=210 bar
W	10.5 - 315 bar (14 bar Standard Setting)	test at 350 bar inlet pressure

* When X = 43, the lowest pressure will be a bit higher than standard.
Any technical questions, please feel free to consult with our sales dept.

Z	OPTIONS	
L	Leakproof hex. socket screw.	
K	Handknob with Lock Knob. (Order Code: 6ZAK001)	
C	Stainless Steel Tamper Resistant Cover.	