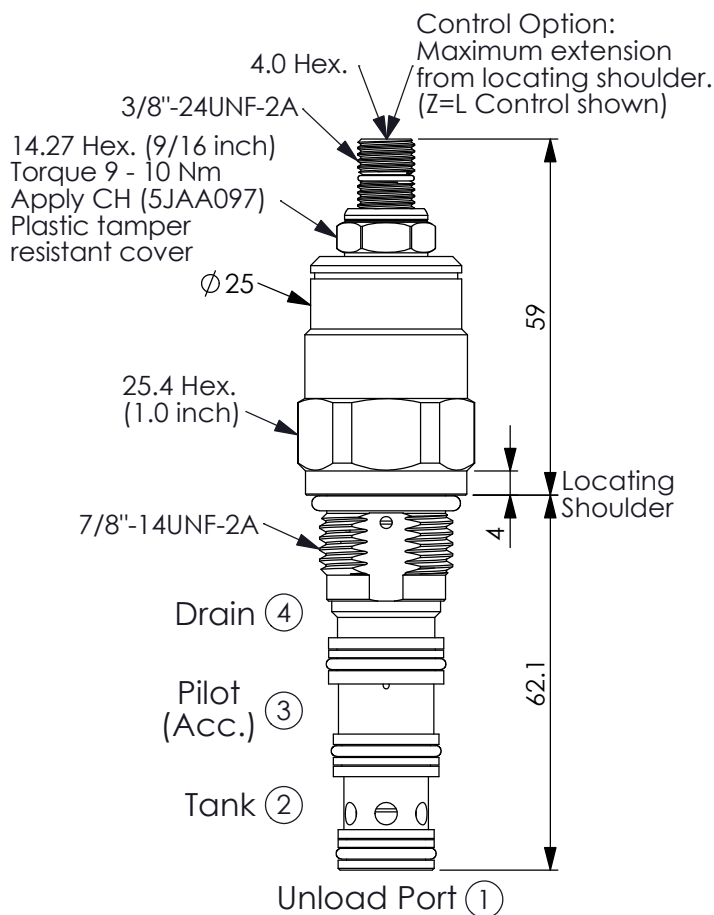
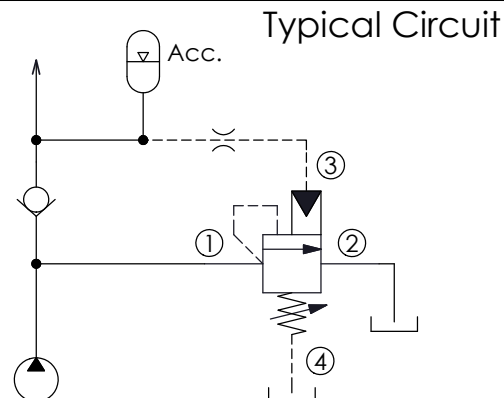
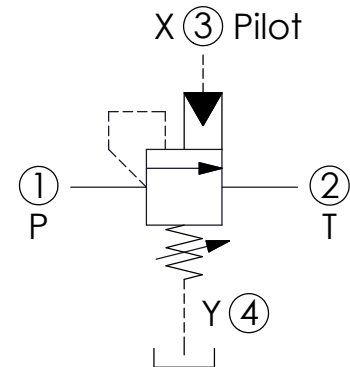
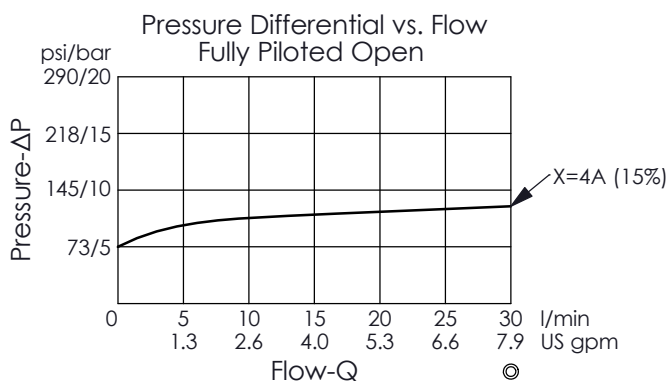


Ordering Code: **QR-10W-X-Y-Z**



UNIT:mm

Illustrations / detail are for reference only. Data subject to change.



TECHNICAL DATA

Max.Operating pressure: 350 bar

Rated flow: 30 l/min

Cavity-Tooling: 10W-4

Installation torque: 35 - 45 Nm

Weight: 0.258 kg

• Back pressure at port ④ (tank port) is added directly to the valve setting in a 1:1 ratio.

X OPERATION

4A 15% Nominal Differential

• Maximum Leakage Approximately (25 cc/min.)

Z OPTIONS

L Leakproof hex. socket screw.



CB Plastic Tamper Resistant Cover (Order Code: 5JAA098)



Y

SPRINGS

ADJUSTMENT RANGES

A

90 - 210 bar (140 bar Standard Setting)

B

7 - 105 bar (70 bar Standard Setting)

W

150 - 350 bar (210 bar Standard Setting)