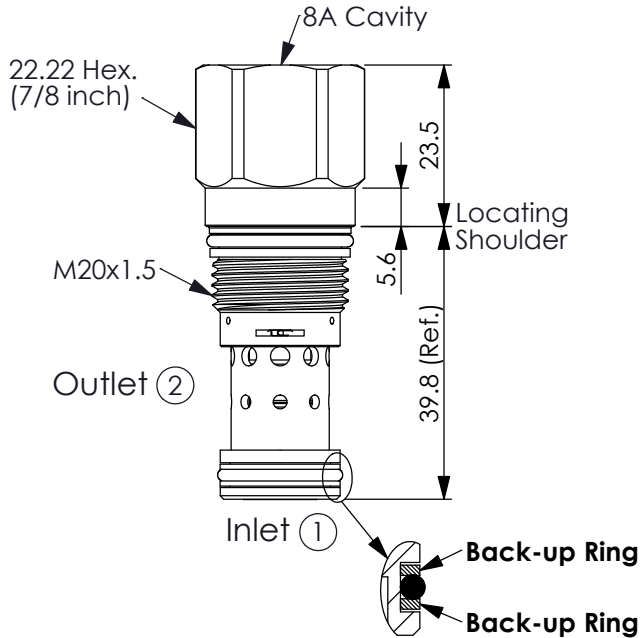


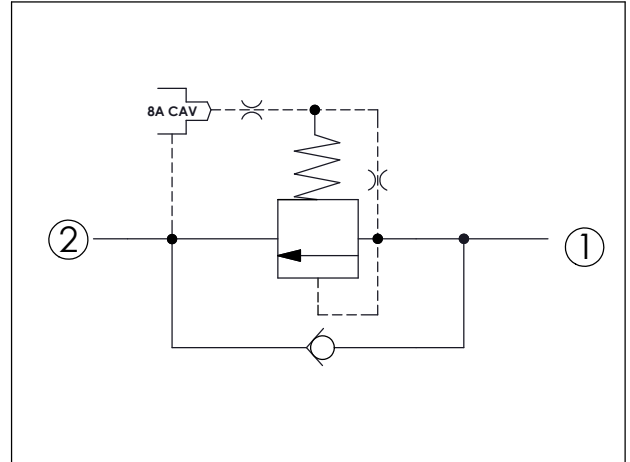
Ordering Code: **RC-10A-X-Y-8-1**

PATENT PENDING



UNIT:mm

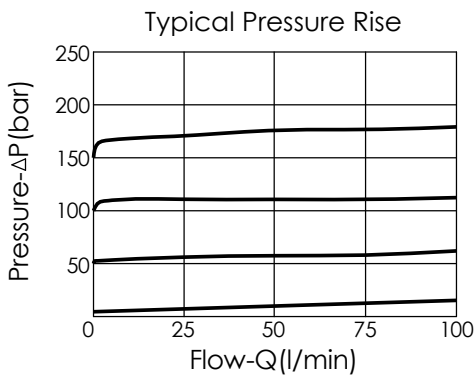
Illustrations / detail are for reference only. Data subject to change.



TECHNICAL DATA

Max. Operating pressure:	350	bar
Rated flow:	95	l/min
Cavity-Tooling:	10A-2	
Installation torque:	40 - 50	Nm
Weight:	0.10	kg

This valve is suitable for cross-over relief braking circuits where Port ② must withstand full system pressure. For further assistance, please contact the Winner Sales Department.



X OPERATION

2G Balanced Poppet

• **Maximum Leakage Approximately (0.7 cc/min./70 bar)**

Y	SPRINGS	
	Minimum Control Pressure	Check Valve Cracking Pressure
D	1.7 bar	2.0 bar
W	7 bar	2.0 bar

Y=W spring is suit for higher pressure drop application, If you have any questions, please contact the Winner sales department.