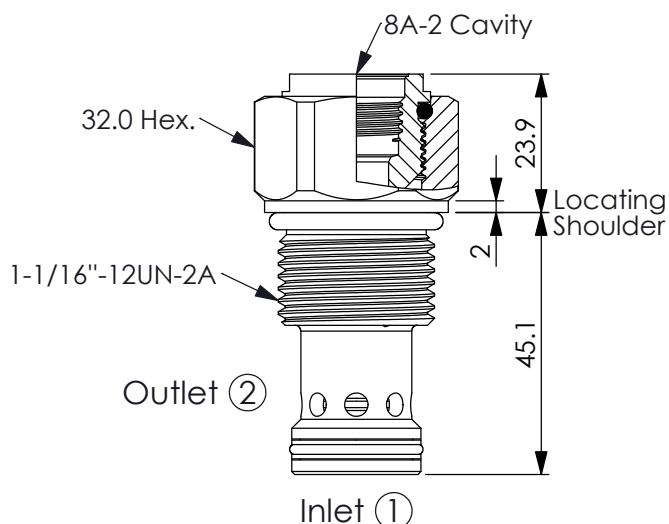
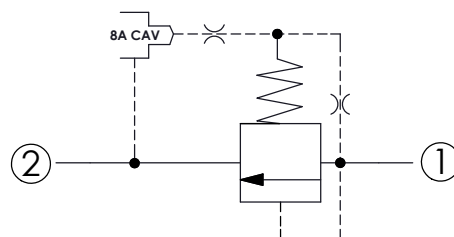


Ordering Code: **RP-12W-X-Y-8**



UNIT:mm

Illustrations / detail are for reference only.  
Data subject to change.



### TECHNICAL DATA

Max. Operating pressure: 350 bar

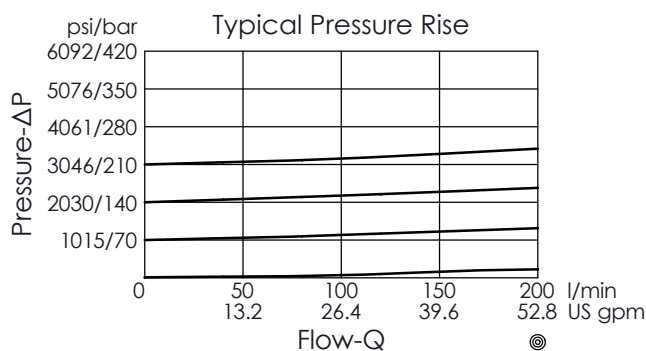
Rated flow: 200 l/min  
(Refer To Performance Chart)

Cavity-Tooling: 12W-2

Installation torque: 54 - 66 Nm

Weight: 0.215 kg

Will accept maximum pressure at port ②; suitable for use in cross port relief circuits. If used in cross port relief circuits, consider spool leakage.



**X**

### OPERATION

**26**

① to ② (P to T)

- Response Time-Typical (10 ms)
- Maximum Leakage Approximately (50 cc/min./70 bar)

**Y**

### SPRINGS

MINIMUM CONTROL PRESSURE

**D**

1.7 bar (25 psi)

**W**

7 bar (100 psi)

W spring is suit for higher pressure drop application.  
Please consult our sales department.