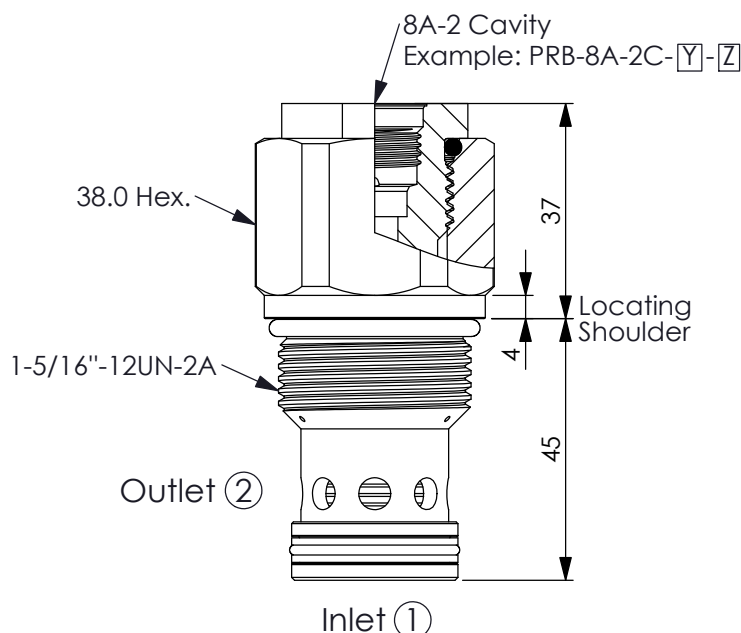
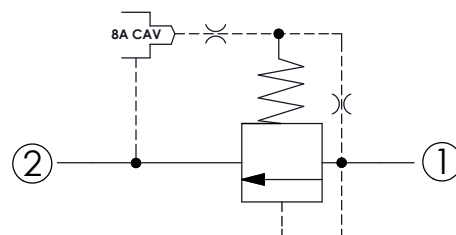


Ordering Code: **RP-16W-X-Y-8**



UNIT:mm

Illustrations / detail are for reference only. Data subject to change.



### TECHNICAL DATA

Max.Operating pressure: 350 bar

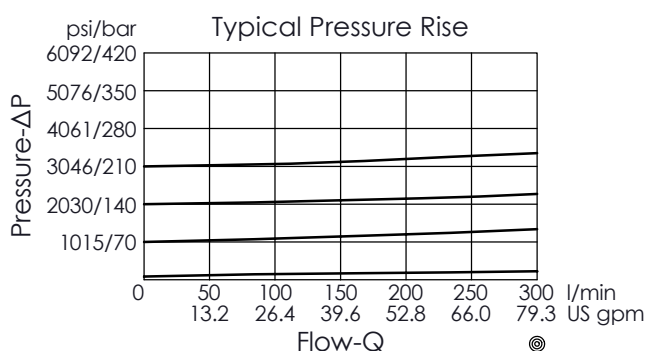
Rated flow: 300 l/min  
(Refer To Performance Chart)

Cavity-Tooling: 16W-2  
(Recommend to use annular groove at port ② when high flow rate)

Installation torque: 80 - 100 Nm

Weight: 0.430 kg

Will accept maximum pressure at port ② but it is nessecery to install double back-up rings to valve for cross port relief circuit application. Leakage of spool should be concerned. If you have any questions, please contact Winner's sales department.



### X OPERATION

**26** ① to ② (P to T)

- Response Time-Typical (10 ms)
- Maximum Leakage Approximately (66 cc/min./70 bar)

**Y**

### SPRINGS

MINIMUM CONTROL PRESSURE

**D**

1.7 bar (25 psi)

**W**

7 bar (100 psi)

W spring is suit for higher pressure drop application. Please consult our sales department.