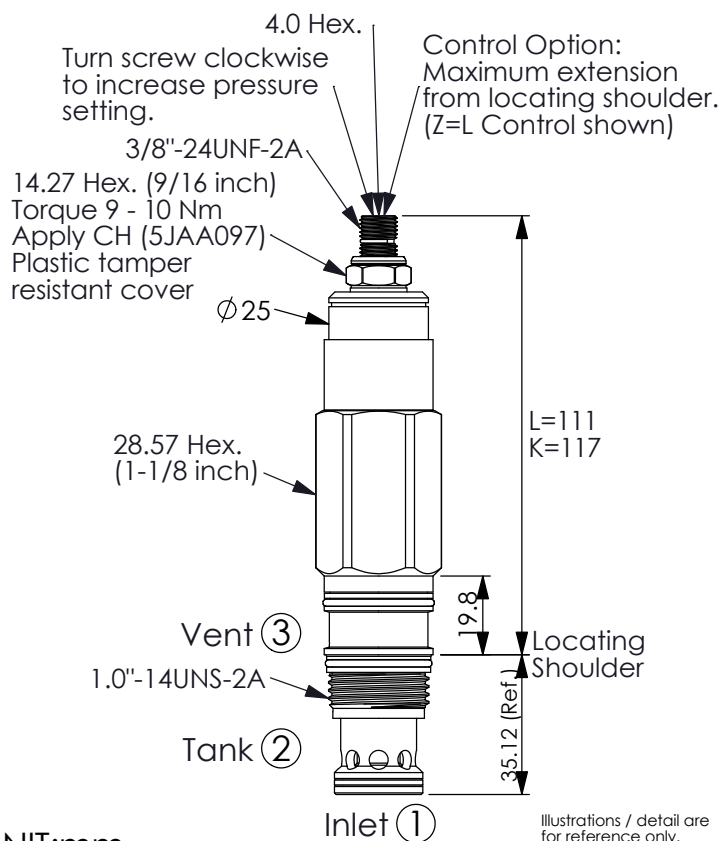
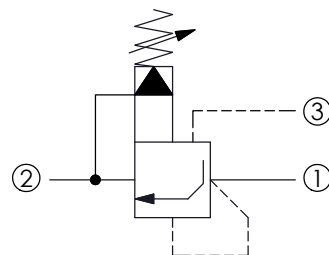


Ordering Code: **RT-2A-X-Y-Z**



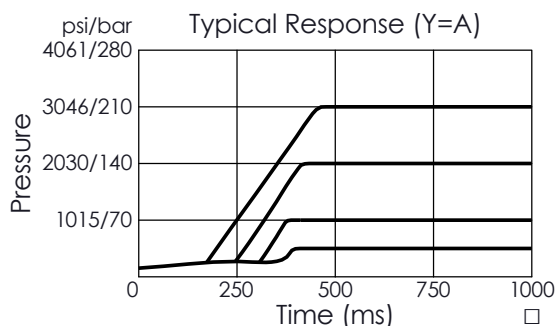
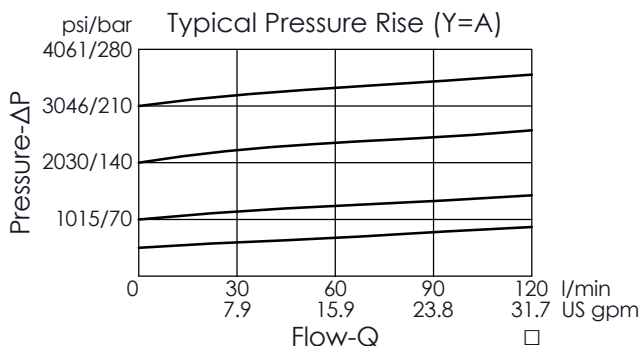
UNIT:mm

Illustrations / detail are for reference only. Data subject to change.



### TECHNICAL DATA

Max. Operating pressure:	350	bar
Rated flow:	120	l/min
Cavity-Tooling:	2A-3	
Installation torque:	60 - 70	Nm
Weight:	0.464 (Z=L)	kg
<b>Note:</b> If your application is used in high pressure and low flow, please contact the Winner sales department.		



The performance curve or data is only for reference, as customers' using condition, pressure, flow, hydraulic fluid viscosity, cleanliness, temperature and so on are different, the curve or data will be different.

Y	SPRINGS	
	ADJUSTMENT RANGES	
A	35 - 210 bar ( 70 bar Standard Setting)	
B	35 - 105 bar ( 70 bar Standard Setting)	
C	70 - 420 bar ( 70 bar Standard Setting)	
W	70 - 315 bar ( 70 bar Standard Setting)	

### X OPERATION

**3G** Balanced Poppet

- Control Pilot Flow (0.16 - 0.41 L/min)
- Response Time-Typical (2 ms)
- Dirt tolerant.
- If the pressure drop of relief valve is high, it easily occurs cavitation which cause noise and manifold erosion. In order to improve this situation, please select balanced poppet structure.
- Back pressure on port ② adds to the valve setting.

### Z OPTIONS

L	Leakproof hex. socket screw.	
K	Handknob with Lock Knob. (Order Code: 6ZAK001)	
C	Stainless Steel Tamper Resistant Cover.	