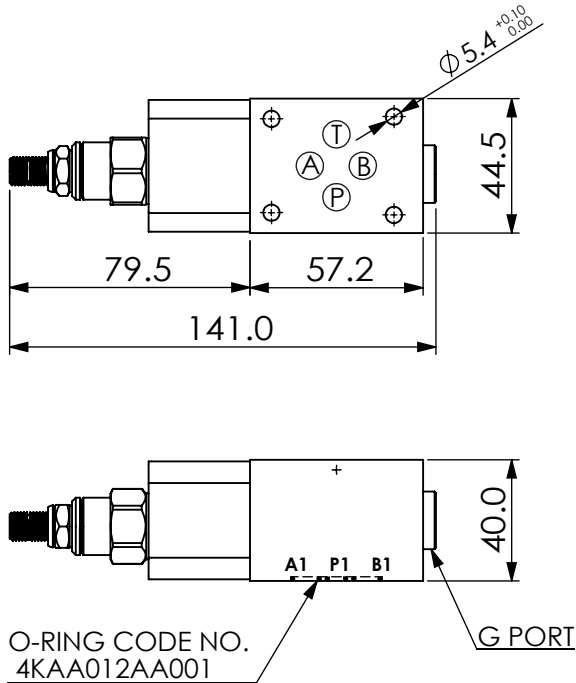
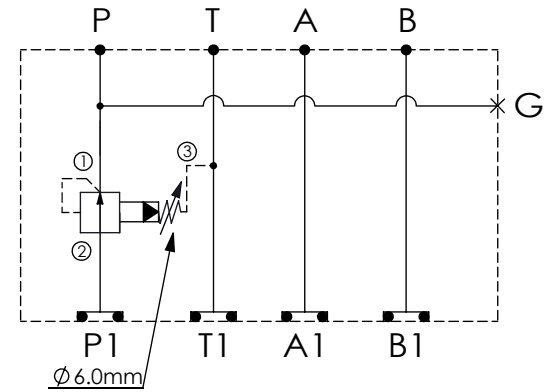


Ordering Code: **MH03PPW-X-Y-Z 02**

Stack Height : 40.0mm



UNIT:mm



TECHNICAL DATA

Aluminum Body Pressure Rating: 210 bar
Ductile Iron
Body Pressure Rating: 350 bar

Rated flow: 40 l/min

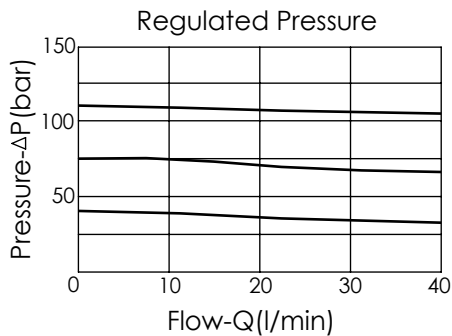
Cartridge Valve:

Refer to PB11A-X-Y-Z

* Refer to Winner Cartridge Valves Catalog.

Aluminum	0.34 kg(WITHOUT VALVE) 0.5 kg(INCLUDE VALVE)
Ductile Iron	1.0 kg(WITHOUT VALVE) 1.16 kg(INCLUDE VALVE)

* If you need the special specification.
Please contact us.



X SELECTION FOR P PORT CONTROL

11A3	CAVITY ONLY(WITHOUT VALVE)
PB0A	PB11A30AL(40LPM,7-210bar) (Pilot Operated Reducing)
PB0B	PB11A30BL(40LPM,3.5-105bar) (Pilot Operated Reducing)

Please refer to the list price of cartridge program.

Y SELECTION FOR G PORT

G02	G 1/4"(Metric)
N02	NPT 1/4"(U.S. Units)

Z BODY MATERIAL

A	HIGH-STRENGTH ALUMINUM
S	DUCTILE IRON