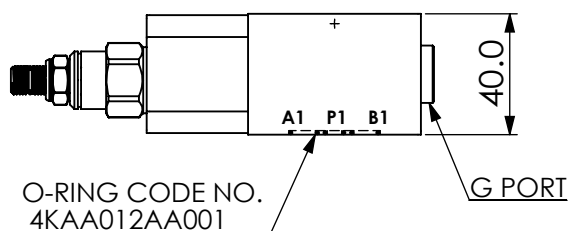
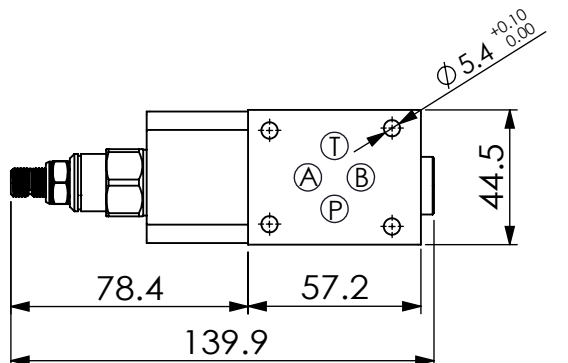
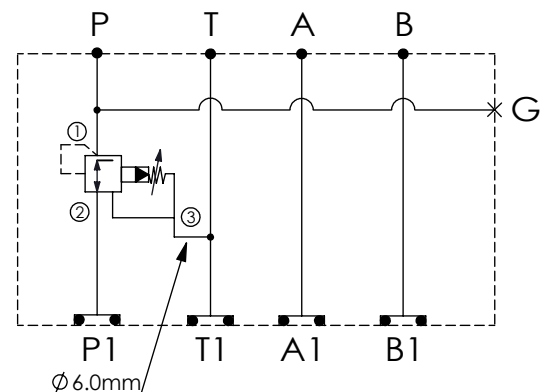
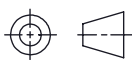


Ordering Code: **MH03PPW-X-Y-Z 02**

Stack Height : 40.0mm



UNIT:mm



TECHNICAL DATA

Aluminum Body Pressure Rating: 210 bar

Ductile Iron

Body Pressure Rating: 350 bar

Rated flow: 40 l/min

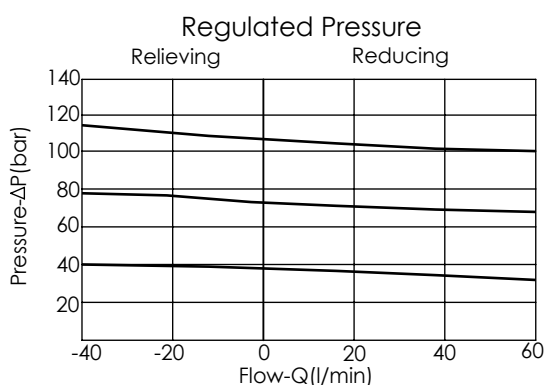
Cartridge Valve:

Refer to PP11A-X-Y-Z

* Refer to Winner Cartridge Valves Catalog.

Aluminum	0.34 kg(WITHOUT VALVE)
	0.5 kg(INCLUDE VALVE)
Ductile Iron	1.0 kg(WITHOUT VALVE)
	1.16 kg(INCLUDE VALVE)

* If you need the special specification.
Please contact us.



X SELECTION FOR P PORT CONTROL

11A3 CAVITY ONLY(WITHOUT VALVE)

PP0A PP11A30AL(40LPM,7.0~210bar)
(Pilot Operated Reducing/Relieving)

PP0B PP11A30BL(40LPM,3.5~105bar)
(Pilot Operated Reducing/Relieving)

Please refer to the list price of cartridge program.

Y SELECTION FOR G PORT

G02 G 1/4"(Metric)

N02 NPT 1/4"(U.S. Units)

Z BODY MATERIAL

A HIGH-STRENGTH ALUMINUM

S DUCTILE IRON