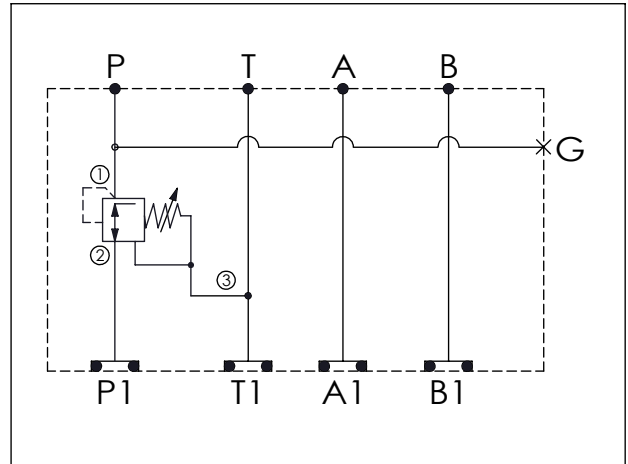


## ISO 05 SANDWICH MANIFOLD

Ordering Code: **MH05PPH-X-Y-Z06**

Stack Height : 100.0mm

UNIT:mm



### TECHNICAL DATA

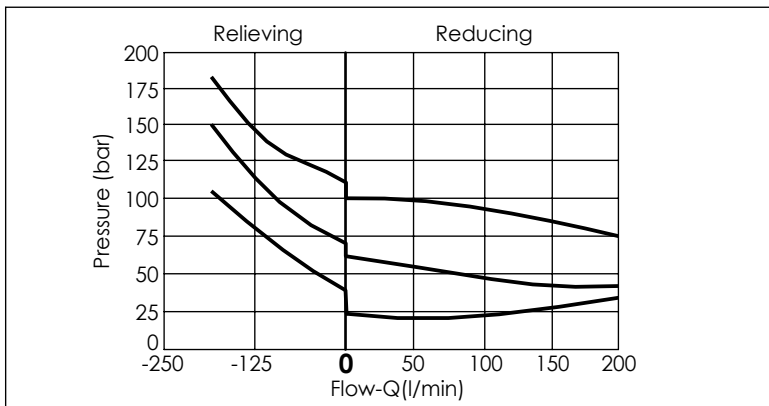
Aluminum Body Pressure Rating: 210 bar  
 Ductile Iron Body Pressure Rating: 350 bar

Rated flow: 80 l/min

Cartridge Valve:  
 Refer to PD17A-X-Y-Z  
 \* Refer to Winner Cartridge Valve Catalog.

Aluminum	1.74 kg(WITHOUT VALVE) 2.41 kg(INCLUDE VALVE)
Ductile Iron	5.06 kg(WITHOUT VALVE) 5.73 kg(INCLUDE VALVE)

\* If you need the special specification. Please contact us.



<b>X</b>	<b>SELECTION FOR P PORT CONTROL</b>
<b>17A3</b>	CAVITY ONLY (WITHOUT VALVE)
<b>PD0A</b>	PD17A30AL (160 LPM , 50-210bar)
Please refer to the list price of cartridge program.	

<b>Y</b>	<b>SELECTION FOR G PORT</b>
<b>G02</b>	G 1/4"(Metric)
<b>N02</b>	NPT 1/4"(U.S. Units)

<b>Z</b>	<b>BODY MATERIAL</b>
<b>A</b>	HIGH-STRENGTH ALUMINUM
<b>S</b>	DUCTILE IRON