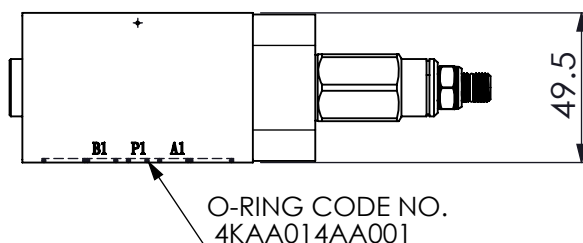
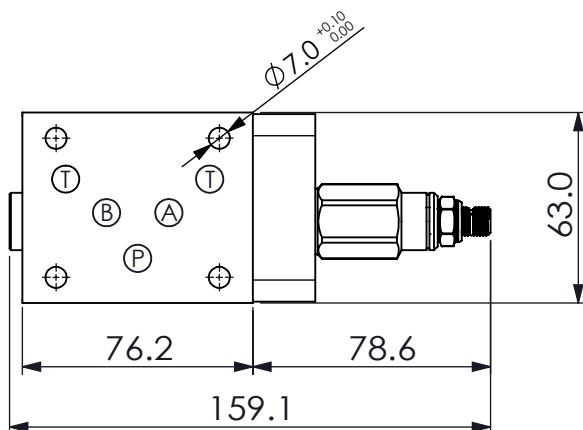


ISO 05 SANDWICH MANIFOLD

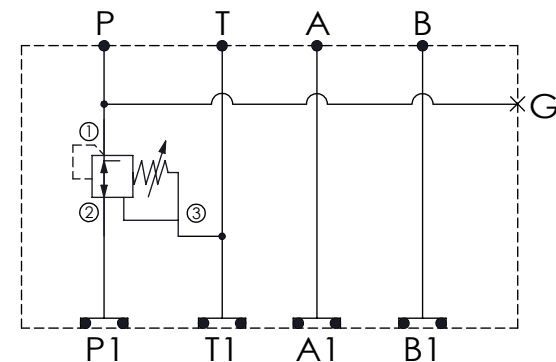
Ordering Code: **MH05PPW-X-Y-Z21**

Stack Height : 49.5mm



O-RING CODE NO.
4KAA014AA001

UNIT:mm



TECHNICAL DATA

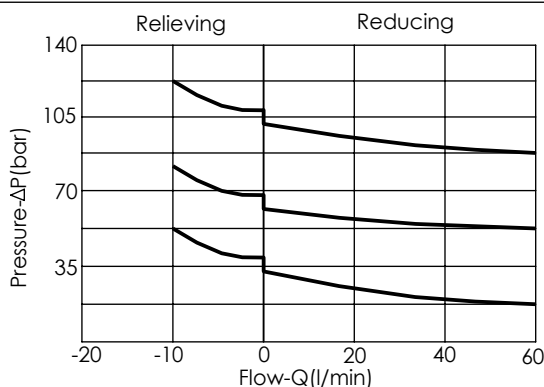
Aluminum Body Pressure Rating: 210 bar
Ductile Iron
Body Pressure Rating: 350 bar

Rated flow: 40 l/min

Cartridge Valve:
Refer to PD11A-X-Y-Z
* Refer to Winner Cartridge Valve Catalog.

Aluminum	0.7 kg(WITHOUT VALVE)
	0.9 kg(INCLUDE VALVE)

* If you need the special specification.
Please contact us.



X SELECTION FOR P PORT CONTROL

11A3 CAVITY ONLY (WITHOUT VALVE)

PD0A PD11A30AL (40 LPM , 35-210bar)

Please refer to the list price of cartridge program.

Y SELECTION FOR G PORT

G02 G 1/4"(Metric)

N02 NPT 1/4"(U.S. Units)

Z BODY MATERIAL

A HIGH-STRENGTH ALUMINUM