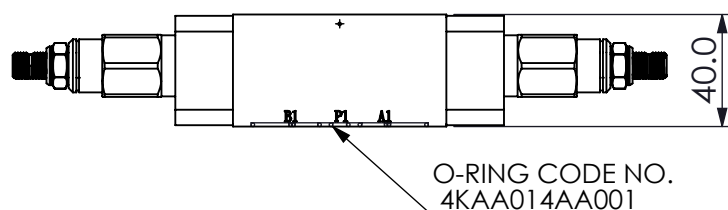
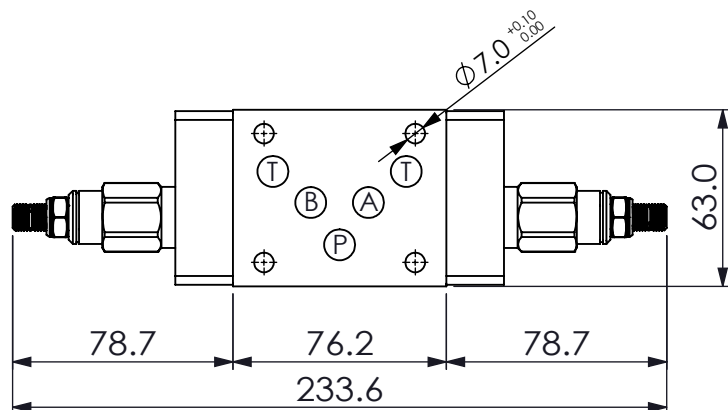


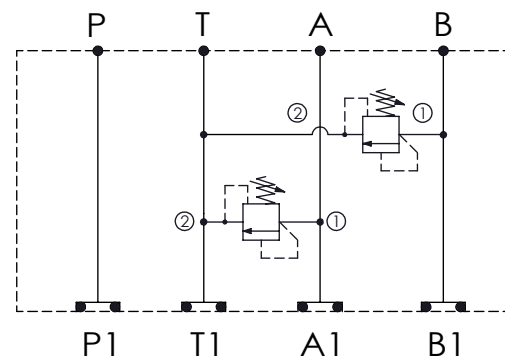
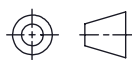
ISO 05 SANDWICH MANIFOLD

Ordering Code: **MH05RDT-X-Y-Z21**

Stack Height : 40.0mm



UNIT:mm



TECHNICAL DATA

Aluminum Body Pressure Rating: 210 bar

Ductile Iron

Body Pressure Rating: 350 bar

Rated flow: 80 l/min

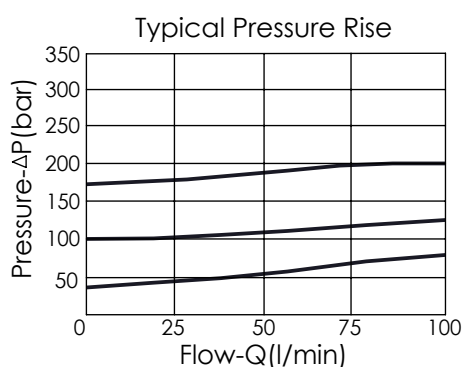
Cartridge Valve:

Refer to RD10A-X-Y-Z

* Refer to Winner Cartridge Valves Catalog.

Aluminum	0.64 kg(WITHOUT VALVES)
	0.98 kg(INCLUDE VALVES)

* If you need the special specification.
Please contact us.



X SELECTION FOR A PORT CONTROL

10A2 CAVITY ONLY(WITHOUT VALVE)

RD5A RD10A25AL (95LPM , 35-210bar)

Please refer to the list price of cartridge program.

Y SELECTION FOR B PORT CONTROL

10A2 CAVITY ONLY(WITHOUT VALVE)

RD5A RD10A25AL (95LPM , 35-210bar)

Please refer to the list price of cartridge program.

Z BODY MATERIAL

A HIGH-STRENGTH ALUMINUM