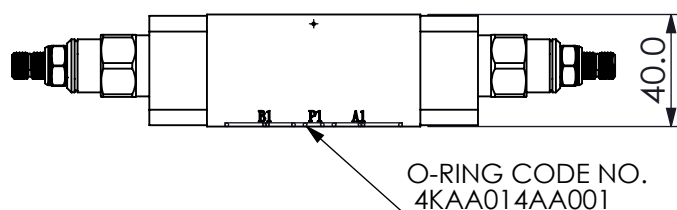
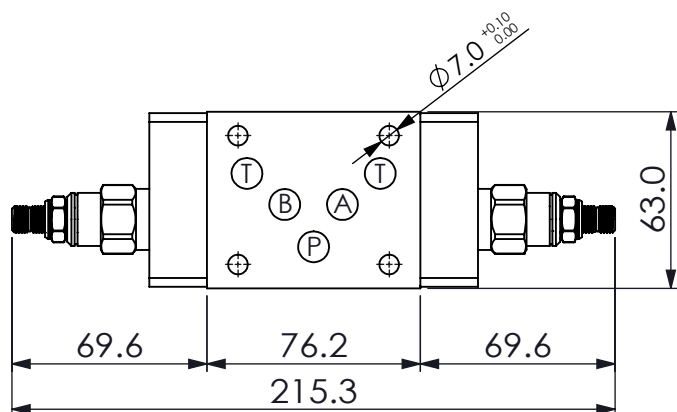


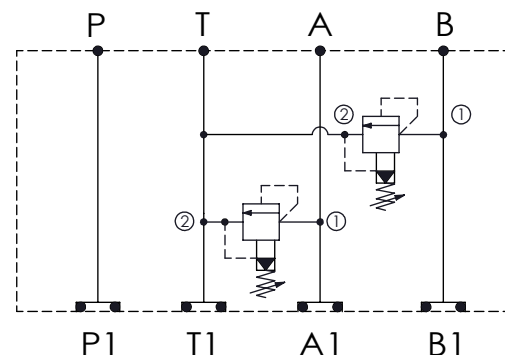
## ISO 05 SANDWICH MANIFOLD

Ordering Code: **MH05RDT-X-Y-Z21**

Stack Height : 40.0mm



UNIT:mm



### TECHNICAL DATA

Aluminum Body Pressure Rating: 210 bar

Ductile Iron

Body Pressure Rating: 350 bar

Rated flow: 80 l/min

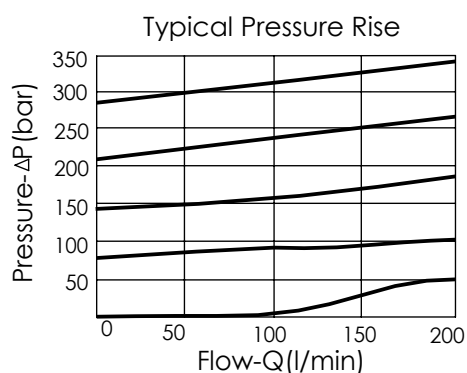
Cartridge Valve:

Refer to RP10A-X-Y-Z

\* Refer to Winner Cartridge Valves Catalog.

Aluminum	0.64 kg(WITHOUT VALVES)
	0.92 kg(INCLUDE VALVES)

\* If you need the special specification.  
Please contact us.



### X SELECTION FOR A PORT CONTROL

**10A2** CAVITY ONLY(WITHOUT VALVE)

**RP0A** RP10A20AL (95LPM , 7-210bar)

Please refer to the list price of cartridge program.

### Y SELECTION FOR B PORT CONTROL

**10A2** CAVITY ONLY(WITHOUT VALVE)

**RP0A** RP10A20AL (95LPM , 7-210bar)

Please refer to the list price of cartridge program.

### Z BODY MATERIAL

**A** HIGH-STRENGTH ALUMINUM