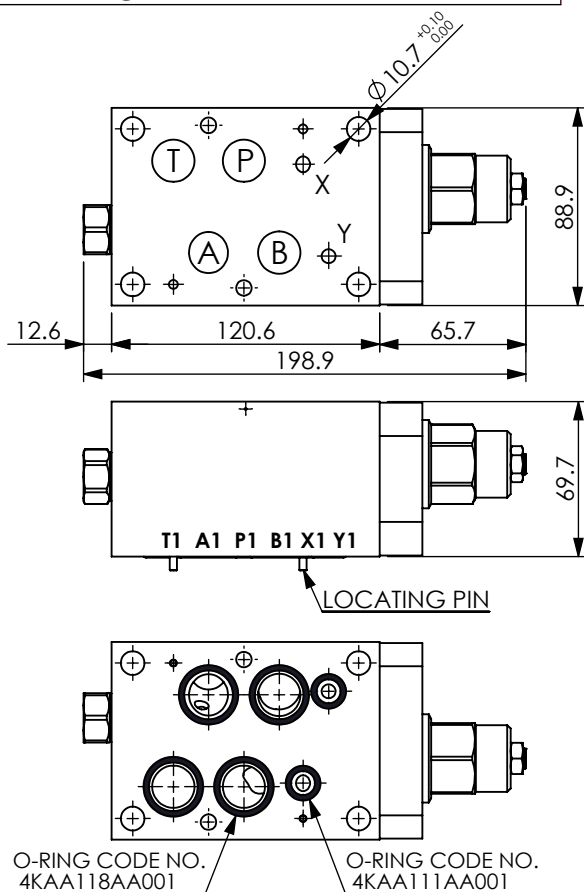


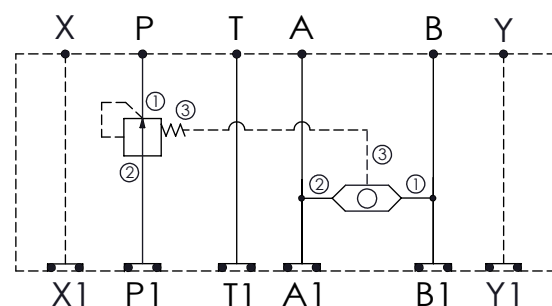
ISO 07 SANDWICH MANIFOLD

Ordering Code: **MH07KPR-X-Y-Z 01**

Stack Height : 69.7mm



UNIT:mm



TECHNICAL DATA

Aluminum Body Pressure Rating: 210 bar

Ductile Iron

Body Pressure Rating: 350 bar

Rated flow: 120 l/min

Cartridge Valve:

Refer to LS11A-X-Y-Z

LP17A-X-Y-Z

* Refer to Winner Cartridge Valves Catalog.

| | |
|--------------|--|
| Aluminum | 1.73 kg(WITHOUT VALVES) 2.35 kg(INCLUDE VALVES) |
| Ductile Iron | 5.07 kg(WITHOUT VALVES) 5.69 kg(INCLUDE VALVES) |

* If you need the special specification.
Please contact us.

X

SELECTION FOR SHUTTLE VALVE

11A3 CAVITY ONLY(WITHOUT VALVE)

LS3N LS11A33NN(10LPM,350bar)

Please refer to the list price of cartridge program.

Z

BODY MATERIAL

A

HIGH-STRENGTH ALUMINUM

S

DUCTILE IRON

Y

SELECTION FOR LOGIC ELEMENT

17A3 CAVITY ONLY(WITHOUT VALVE)

LP35 LP17A3035N(240LPM,3.5bar)

LP70 LP17A3070N(240LPM,7.0bar)

LP100 LP17A30100N(240LPM,10.0bar)

LP140 LP17A30140N(240LPM,14.0bar)

Please refer to the list price of cartridge program.