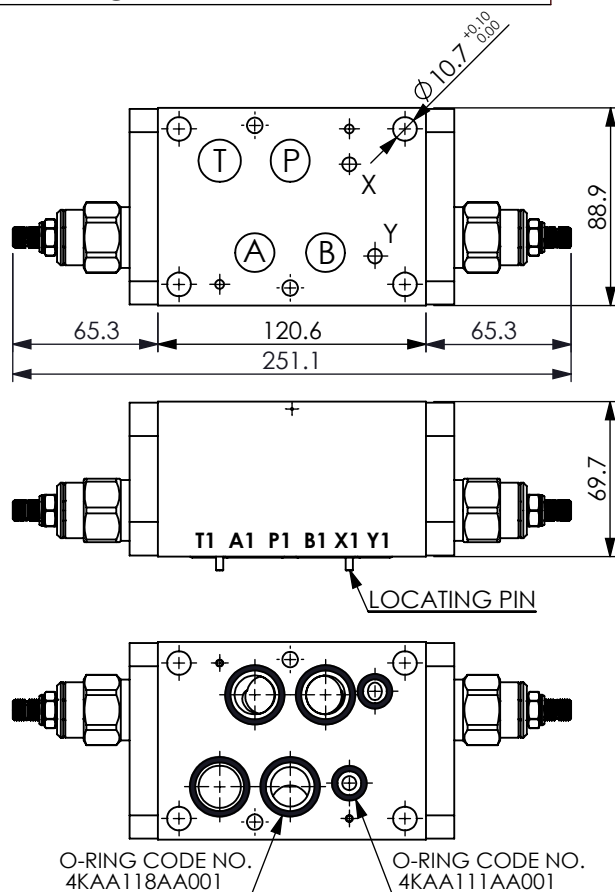


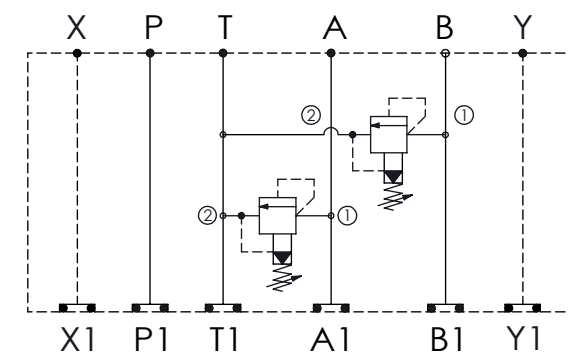
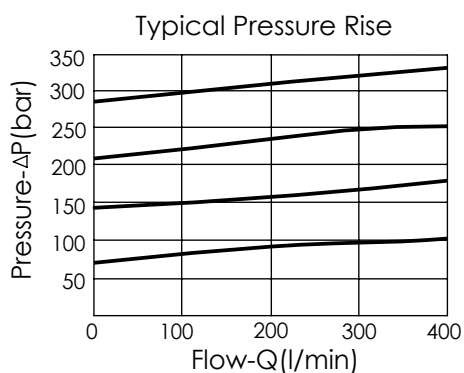
## ISO 07 SANDWICH MANIFOLD

Ordering Code: **MH07RDT-X-Y-Z 01**

Stack Height : 69.7mm



UNIT:mm



### TECHNICAL DATA

Aluminum Body Pressure Rating: 210 bar  
Ductile Iron  
Body Pressure Rating: 350 bar

Rated flow: 120 l/min

Cartridge Valve:  
Refer to RP3A-X-Y-Z  
\* Refer to Winner Cartridge Valve Catalog.

Aluminum	1.93 kg(WITHOUT VALVES) 2.43 kg(INCLUDE VALVES)
Ductile Iron	5.64 kg(WITHOUT VALVES) 6.14 kg(INCLUDE VALVES)

\* If you need the special specification.  
Please contact us.

### X SELECTION FOR A PORT CONTROL

<b>3A2</b>	CAVITY ONLY(WITHOUT VALVE)
<b>RP0A</b>	RP3A20AL (200LPM , 7-210bar)

Please refer to the list price of cartridge program.

### Y SELECTION FOR B PORT CONTROL

<b>3A2</b>	CAVITY ONLY(WITHOUT VALVE)
<b>RP0A</b>	RP3A20AL (200LPM , 7-210bar)

Please refer to the list price of cartridge program.

### Z BODY MATERIAL

<b>A</b>	HIGH-STRENGTH ALUMINUM
<b>S</b>	DUCTILE IRON