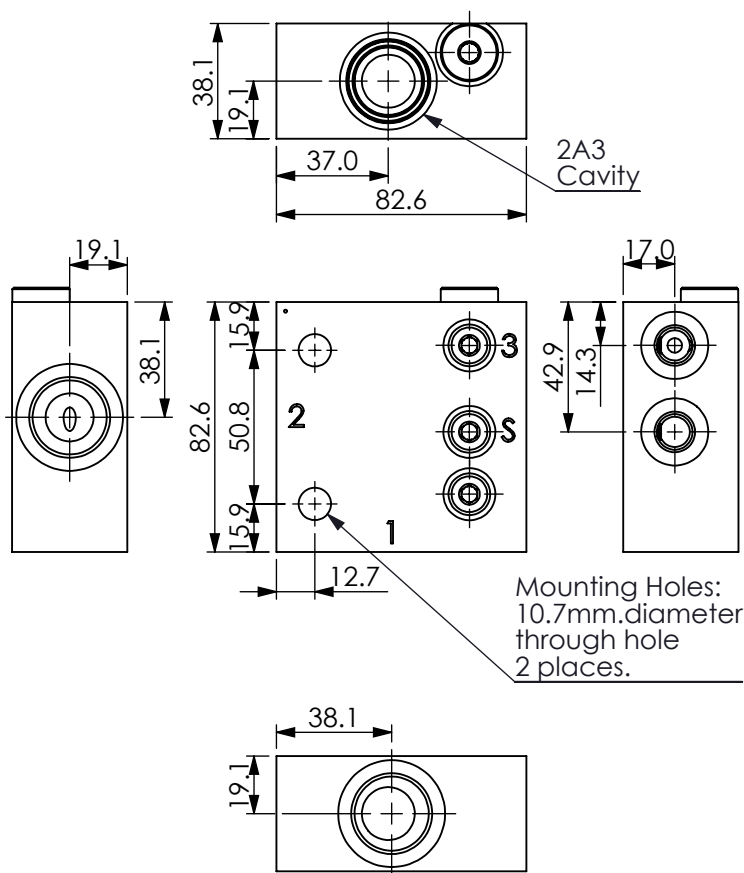
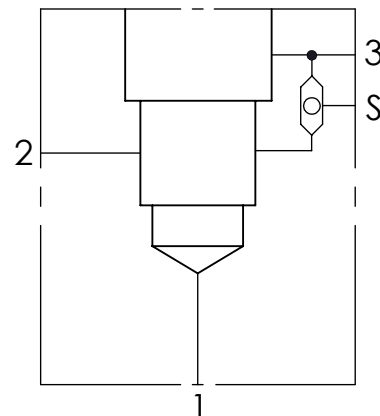


Ordering Code: **ML-2A3-X-Y 32-Z**



UNIT:mm



TECHNICAL DATA

Aluminum Body Pressure Rating: 210 bar

Steel Body Pressure Rating: 350 bar

Cavity:

Refer to 2A3

* Refer to Winner Cartridge Valves Catalog.

Aluminum	0.55 kg(WITHOUT VALVES)

* If you need the special specification.
Please contact us.

PORT SIZE

X	PORTS	PORT	PORT	
	1,2	3	S	
G06A	G 3/4"	G 1/4"	G 1/4"	

Y

BODY MATERIAL

AS

HIGH-STRENGTH ALUMINUM

Z

CARTRIDGE VALVES SELECTION

WITHOUT VALVE

RV0A RV2A30AL (120LPM,7-210bar)

CB3H CB2A33HL (3:1 , 7-280bar)

CO03 CO2A3003N (120LPM ,0.3bar)

SP0A SP2A30AL (120LPM,7-210bar)

Please refer to the list price of cartridge program.