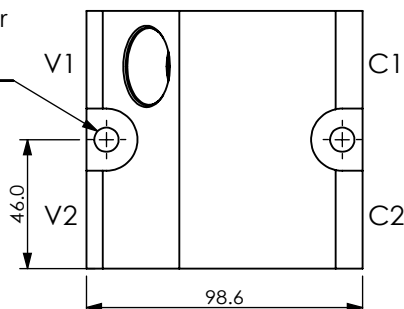
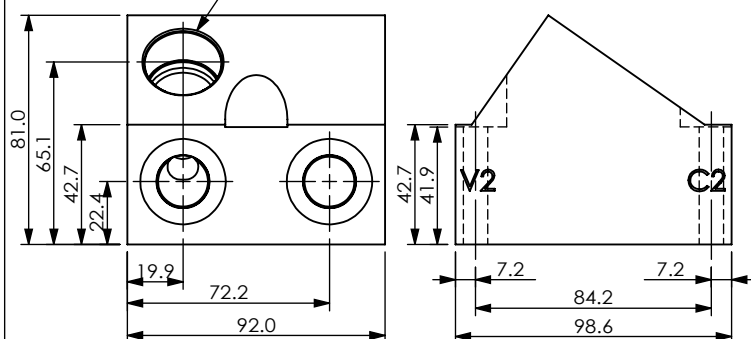


Ordering Code: **ML-2A3-X-Y 41-Z**

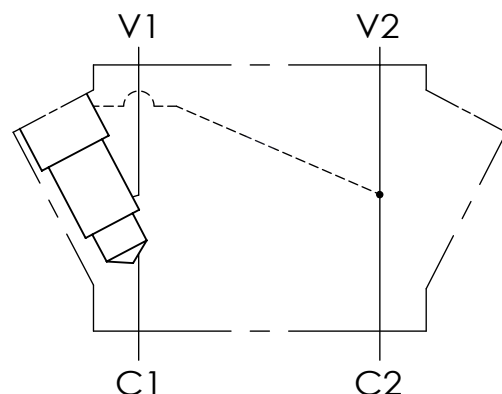
Mounting Holes:  
Ø8.7mm. diameter  
through hole.  
2 places.



2A3 Cavity  
Locating Shoulder  
Depth 18.3 mm.



UNIT:mm



### TECHNICAL DATA

Aluminum Body Pressure Rating: 210 bar  
Ductile Iron  
Body Pressure Rating: 350 bar

Cavity:

Refer to 2A3

\* Refer to Winner Cartridge Valves Catalog.

Aluminum	1.25 kg(WITHOUT VALVES)
Ductile Iron	3.5 kg(WITHOUT VALVES)

\* If you need the special specification.  
Please contact us.

### PORT SIZE

X	PORTS	PORTS	
	V1,V2	C1,C2	
<b>G04</b>	G 1/2"	G 1/2"	
<b>S12</b>	SAE 12	SAE 12	

### Y BODY MATERIAL

**A** HIGH-STRENGTH ALUMINUM

**S** DUCTILE IRON

### Z CARTRIDGE VALVES SELECTION

WITHOUT VALVE

**CB3H** CB2A33HL (3:1 , 7-280bar)

**CO03** CO2A3003N (120LPM ,0.3bar)

Please refer to the list price of cartridge program.