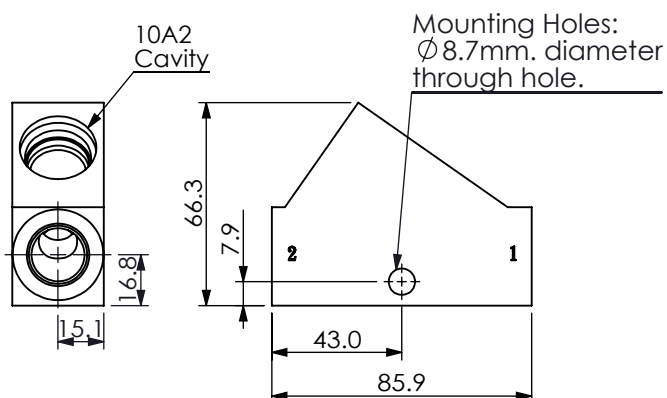
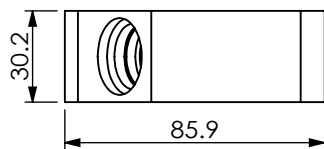
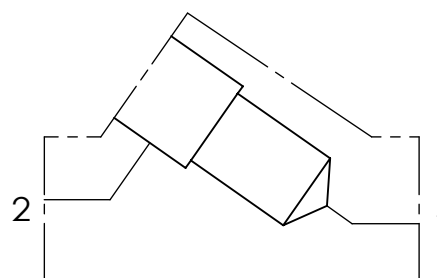


Ordering Code: **ML-10A2-X-Y 41-Z**



UNIT:mm



TECHNICAL DATA

Aluminum Body Pressure Rating: 210 bar

Steel Body Pressure Rating: 350 bar

Cavity:

Refer to 10A2

* Refer to Winner Cartridge Valves Catalog.

Aluminum	0.25 kg(WITHOUT VALVES)

* If you need the special specification.
Please contact us.

PORT SIZE

X	PORT	PORT	
	1	2	
S06	SAE 6	SAE 6	
S08	SAE 8	SAE 8	

Y

BODY MATERIAL

C

HIGH-STRENGTH ALUMINUM
(Clear anodize)

A

HIGH-STRENGTH ALUMINUM

If black anodizing or any other surface treatment is required,
please contact Winner's sales department.

Z

CARTRIDGE VALVES SELECTION

WITHOUT VALVE

RP0A

RP10A20AL(95 LPM,7~210 bar)

RD5A

RD10A25AL(95 LPM,35~210 bar)

Please refer to the list price of cartridge program.