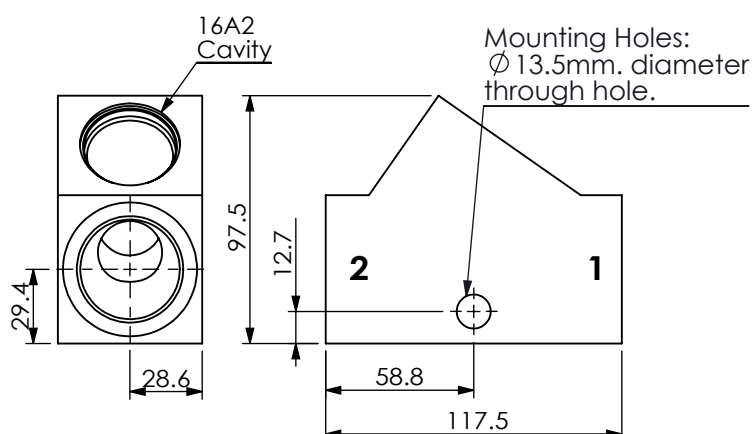
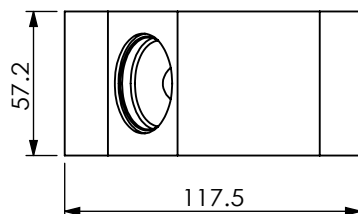
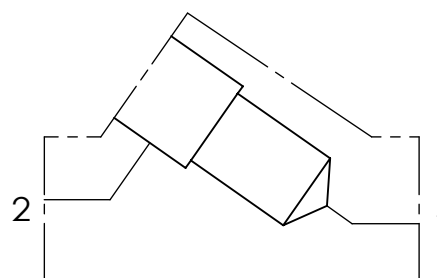


Ordering Code: **ML-16A2-X-Y 41-Z**



UNIT:mm



TECHNICAL DATA

Aluminum Body Pressure Rating: 210 bar
Ductile Iron Body Pressure Rating: 350 bar

Cavity:

Refer to 16A2

* Refer to Winner Cartridge Valves Catalog.

| | |
|--------------|-------------------------|
| Aluminum | 0.9 kg(WITHOUT VALVES) |
| Ductile Iron | 2.62 kg(WITHOUT VALVES) |

* If you need the special specification. Please contact us.

PORT SIZE

| X | PORT | | |
|------------|----------|----------|--|
| | 1 | 2 | |
| G06 | G 3/4" | G 3/4" | |
| G08 | G 1" | G 1" | |
| G10 | G 1-1/4" | G 1-1/4" | |
| S16 | SAE 16 | SAE 16 | |

Y BODY MATERIAL

A HIGH-STRENGTH ALUMINUM

S DUCTILE IRON

Z CARTRIDGE VALVES SELECTION

WITHOUT VALVE

| | |
|---------------|------------------------------|
| RPOA | RP16A20AL(380 LPM,7~210 bar) |
| CV2003 | CV16A2003N (320LPM,0.3bar) |
| FROA | FR16A20AL (0.8-95LPM) |

Please refer to the list price of cartridge program.