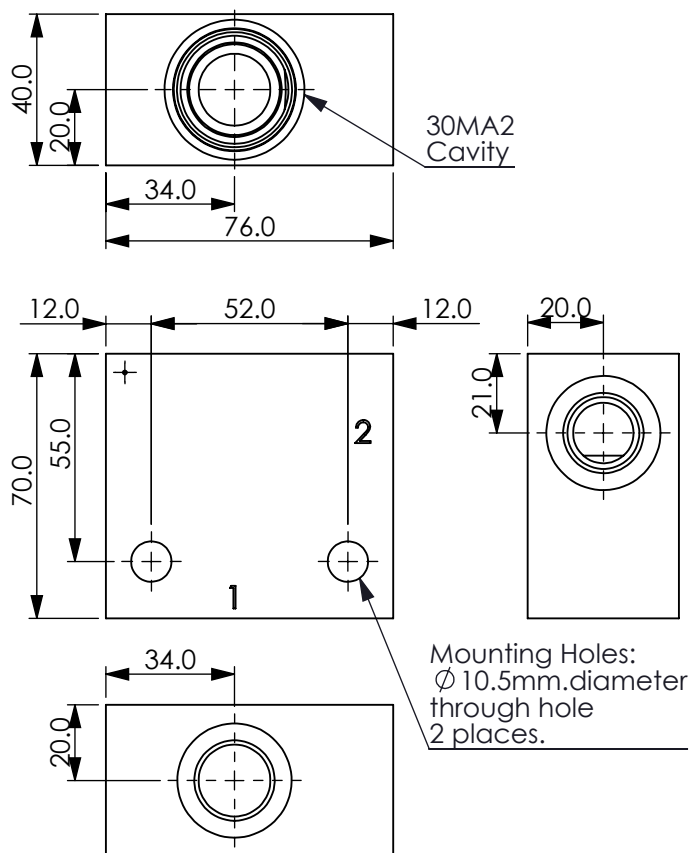
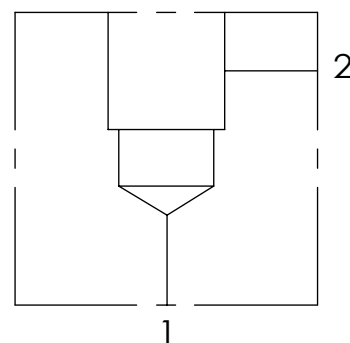


Ordering Code: **ML-30MA2-X-Y 01-Z**



UNIT:mm



TECHNICAL DATA

Aluminum Body Pressure Rating: 210 bar

Steel Body Pressure Rating: 350 bar

Cavity:

Refer to 30MA2

* Refer to Winner Cartridge Valves Catalog.

Aluminum	0.44 kg(WITHOUT VALVES)

* If you need the special specification.
Please contact us.

PORT SIZE

X	PORT	PORT	
	1	2	
G04	G 1/2"	G 1/2"	

Y

BODY MATERIAL

A

HIGH-STRENGTH ALUMINUM

Z

CARTRIDGE VALVES SELECTION

WITHOUT VALVE