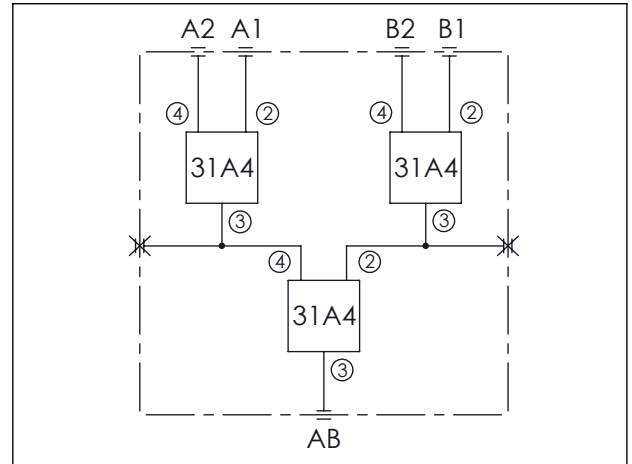
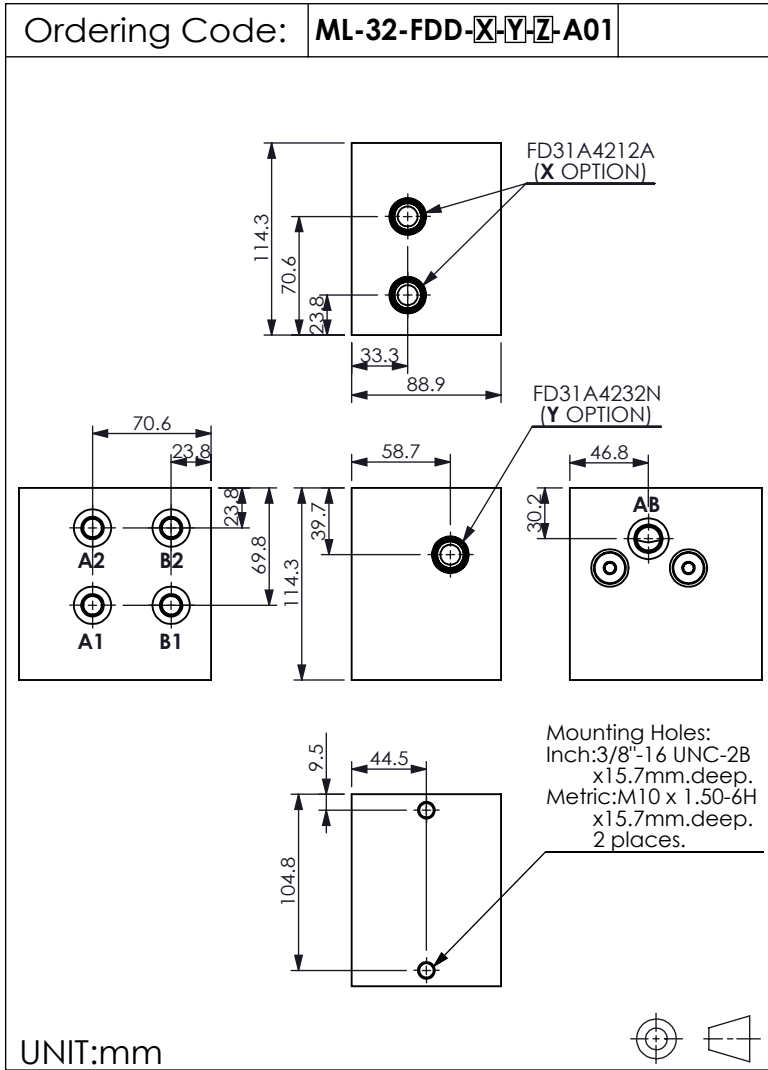


## LINE MOUNT BODIES



### TECHNICAL DATA

Aluminum (A01)	210 bar
Body Pressure Rating:	
Steel (T01)	350 bar
Body Pressure Rating:	

Cavity:  
Refer to 31A4

\* Refer to Winner Cartridge Valves Catalog.

Aluminum	2.9 kg(WITHOUT VALVES)

\* If you need the special specification. Please contact us.

<b>X</b>	<b>CARTRIDGE VALVES SELECTION</b>
<b>31A4</b>	CAVITY ONLY(WITHOUT VALVE)
<b>FD4212A</b>	FD31A4212A (2-12 LPM , Ratio 50:50) x2 PCS
Please refer to the list price of cartridge program.	

<b>Y</b>	<b>CARTRIDGE VALVES SELECTION</b>
<b>31A4</b>	CAVITY ONLY(WITHOUT VALVE)
<b>FD4232</b>	FD31A4232N (6-32 LPM , Ratio 50:50) x1 PC
Please refer to the list price of cartridge program.	

	<b>PORT SIZE</b>		
<b>Z</b>	<b>PORT</b>	<b>PORTS</b>	
	<b>AB</b>	<b>A1, A2, B1, B2</b>	
<b>G03</b>	G 3/8"	G 1/4"	