

Ordering Code: **ML-30-RPD-X-Y-Z-A01**

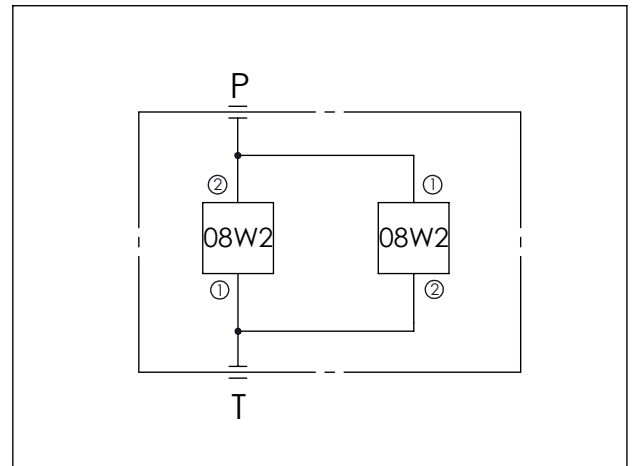
ML-30-RPD-X-Y-Z-T01

EP08W2 (X OPTION)

RD08W2 (Y OPTION)

Mounting Holes: $\varnothing 6.5$ mm. diameter through hole 2 places.

UNIT:mm



TECHNICAL DATA

| | |
|-----------------------|---------|
| Aluminum (A01) | 210 bar |
| Body Pressure Rating: | |
| Steel (T01) | 350 bar |
| Body Pressure Rating: | |

Cavity:
Refer to 08W2

* Refer to Winner Cartridge Valves Catalog.

| | |
|----------|-------------------------|
| Aluminum | 0.26 kg(WITHOUT VALVES) |
| Steel | 0.75 kg(WITHOUT VALVES) |

* If you need the special specification. Please contact us.

TYPICAL CIRCUIT:

| X | SELECTION FOR A PORT CONTROL (REFER TO EP08W-X-Y-Z) |
|---|---|
| 08W2 | CAVITY ONLY(WITHOUT VALVE) |
| EP01 | EP08W2A01N05 , 40LPM,350bar (NORMALLY CLOSED,WITHOUT COIL) |
| EP02 | EP08W2A02N05 , 40LPM,350bar (NORMALLY OPEN,WITHOUT COIL) |
| EP01M | EP08W2A01M05 , 40LPM,350bar(NORMALLY CLOSED WITH KNOB STYLE MANUAL OVERRIDE,WITHOUT COIL) |
| EP02P | EP08W2A02P05 , 40LPM,350bar(NORMALLY OPEN WITH PUSH STYLE MANUAL OVERRIDE,WITHOUT COIL) |
| COIL MUST BE ORDERED SEPARATELY (REFER TO EC-04W-X-Y-Z) | |

| Y | CARTRIDGE VALVES SELECTION |
|-------------|-------------------------------|
| 08W2 | CAVITY ONLY(WITHOUT VALVE) |
| RD2A | RD08W22AL (25LPM , 80-210bar) |
| | |
| | |

Please refer to the list price of cartridge program.

| Z | PORT SIZE | |
|------------|-----------|--------|
| | PORTS | |
| | P | T |
| G03 | G 3/8" | G 3/8" |