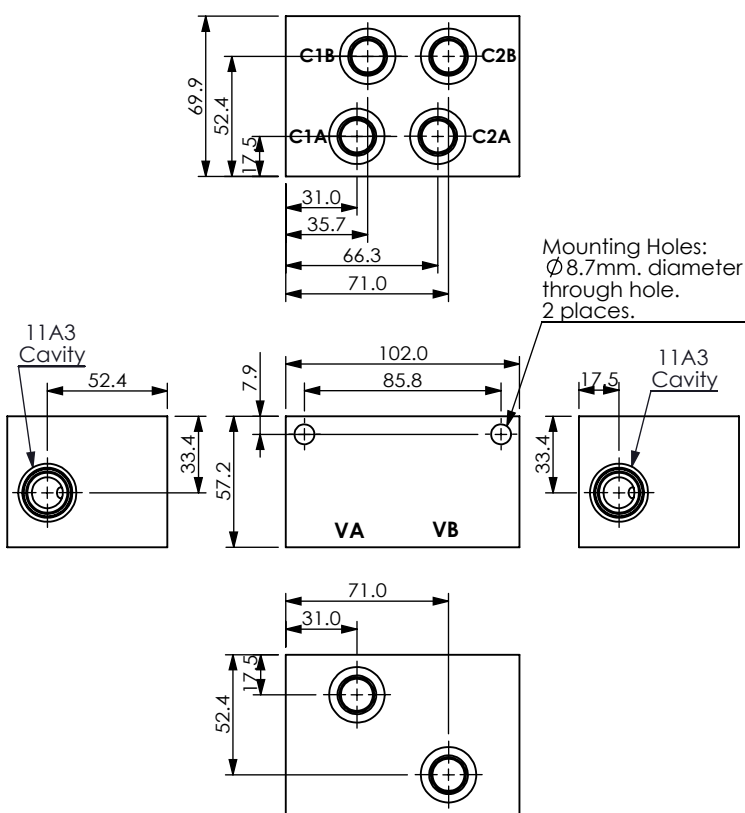
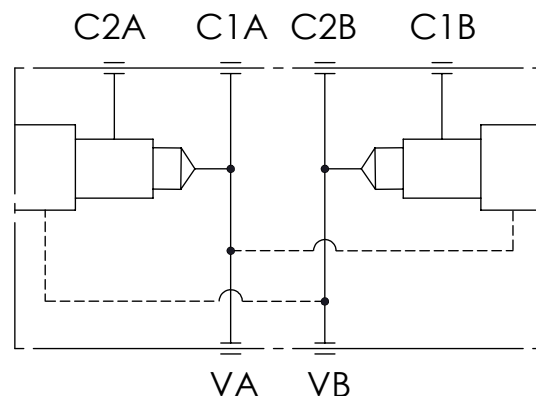


Ordering Code: **ML-60-SDW-X-Y-Z-A01**



UNIT:mm



TECHNICAL DATA

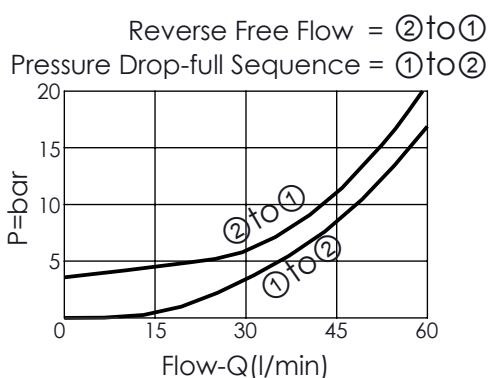
Aluminum (A01)
Body Pressure Rating: 210 bar
Steel (T01)
Body Pressure Rating: 350 bar

Cavity:
Refer to 11A3

* Refer to Winner Cartridge Valves Catalog.

Aluminum	0.9 kg(WITHOUT VALVES)

* If you need the special specification.
Please contact us.



X CARTRIDGE VALVES SELECTION

11A3 CAVITY ONLY(WITHOUT VALVE)
SC0A SC11A30AL (60LPM , 35-210bar)

Please refer to the list price of cartridge program.

Y CARTRIDGE VALVES SELECTION

11A3 CAVITY ONLY(WITHOUT VALVE)
SC0A SC11A30AL (60LPM , 35-210bar)

Please refer to the list price of cartridge program.

PORT SIZE

Z

PORTS		
	VA,VB	C1A,C2A,C1B,C2B
G03	G 3/8"	G 3/8"
S08	SAE 8	SAE 8