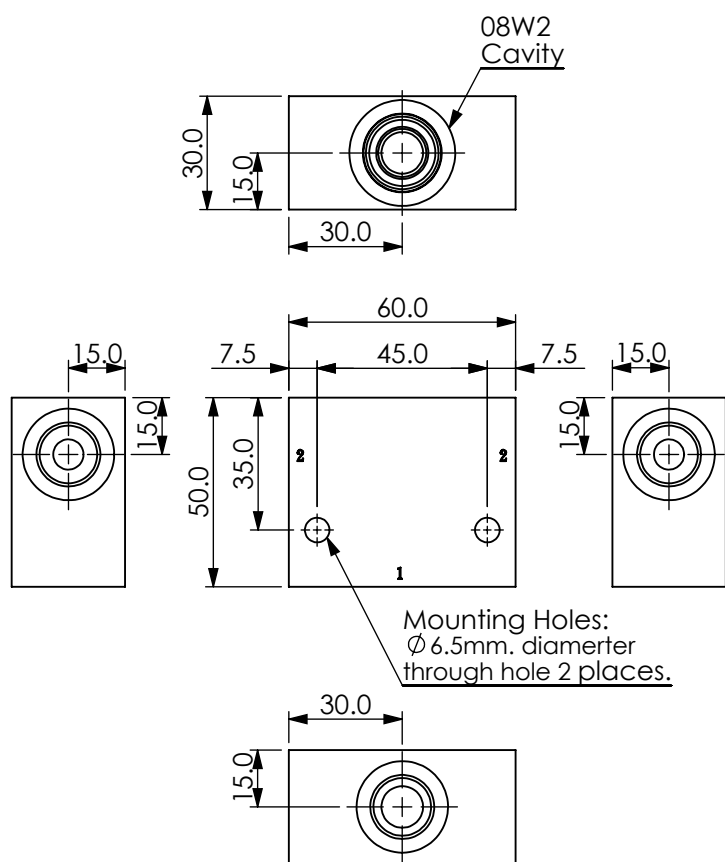
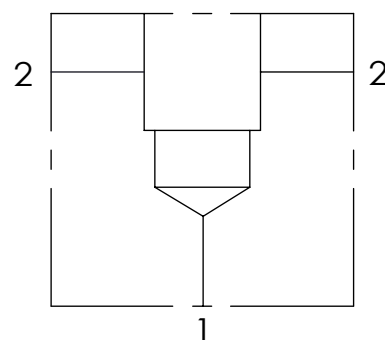


Ordering Code: **ML-08W2-X-Y 02-Z**



UNIT:mm



TECHNICAL DATA

Aluminum Body Pressure Rating: 210 bar

Steel Body Pressure Rating: 350 bar

Cavity:

Refer to 08W2

* Refer to Winner Cartridge Valves Catalog.

Aluminum	0.22 kg(WITHOUT VALVES)
Steel	0.55 kg(WITHOUT VALVES)

* If you need the special specification.
Please contact us.

PORT SIZE

X	PORT	PORT	
	1	2	
G03	G 3/8"	G 3/8"	

Y

BODY MATERIAL

A

HIGH-STRENGTH ALUMINUM

T

STEEL (black oxide)

Z

CARTRIDGE VALVES SELECTION

WITHOUT VALVE

RD0A RD08W20AL(20LPM,80-210bar)

EP01 EP08W2A01N05 , 40LPM,350bar
(NORMALLY CLOSED,WITHOUT COIL)

EP02 EP08W2A02N05 , 40LPM,350bar
(NORMALLY OPEN,WITHOUT COIL)

COIL MUST BE ORDERED SEPARATELY
(REFER TO EC-04W-X-Y-Z)