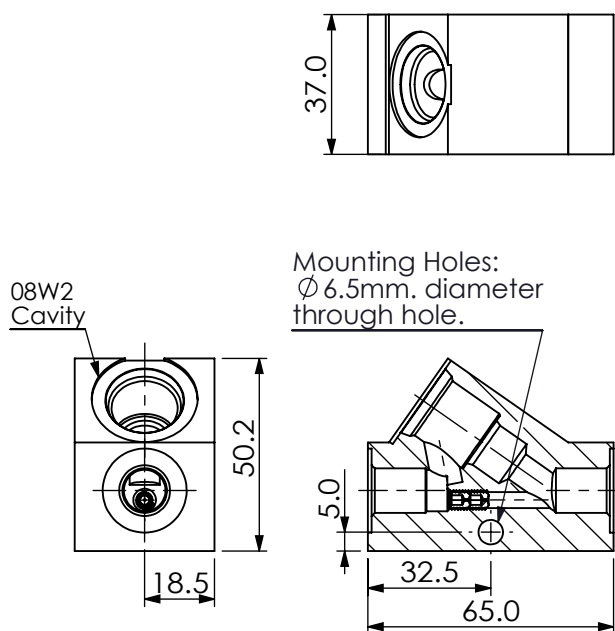
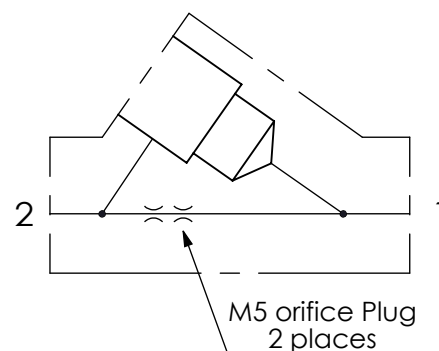


Ordering Code: **ML-08W2-X-Y 42-Z**



UNIT:mm



TECHNICAL DATA

Aluminum Body Pressure Rating: 210 bar

Steel Body Pressure Rating: 350 bar

Cavity:

Refer to 08W2

* Refer to Winner Cartridge Valves Catalog.

Aluminum	0.21 kg(WITHOUT VALVES)

* If you need the special specification.
Please contact us.

PORT SIZE

X	PORT	PORT	
	1	2	
G02	G 1/4"	G 1/4"	

Y

BODY MATERIAL

A

HIGH-STRENGTH ALUMINUM

Z

OPTIONAL ORIFICE PLUGS

without orifice Plugs

05

ø 0.5 mm
(M5 orifice Plug, 2 places)