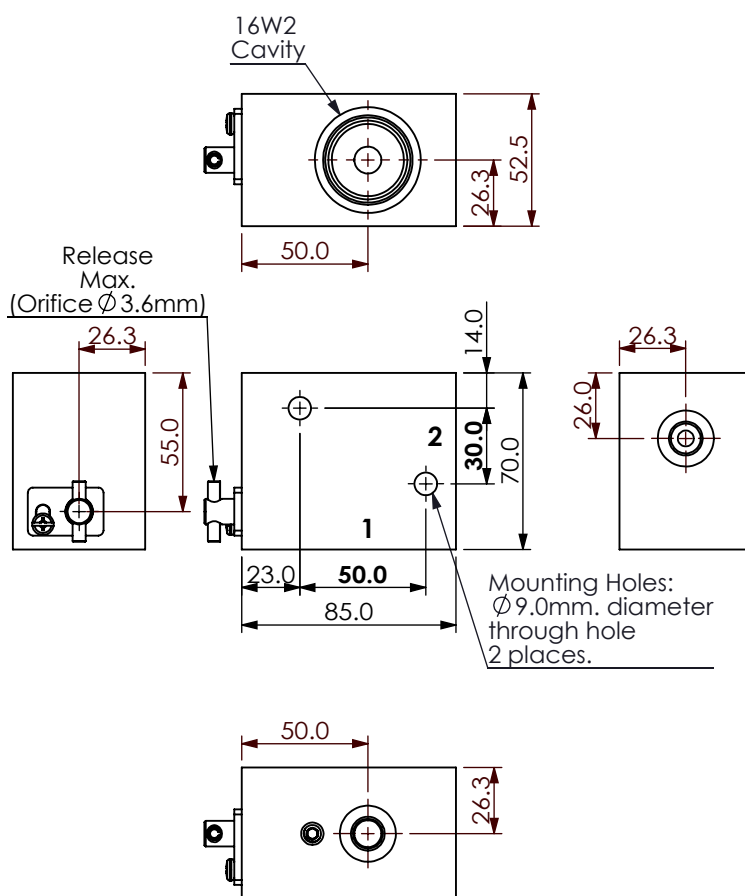
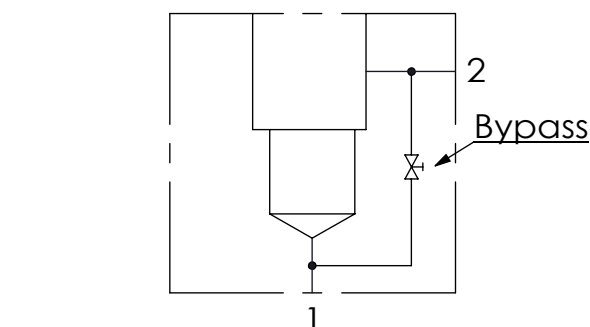


Ordering Code: **ML-16W2-X-Y 31-Z**



UNIT:mm



### TECHNICAL DATA

Aluminum Body Pressure Rating: 210 bar

Steel Body Pressure Rating: 350 bar

Cavity:

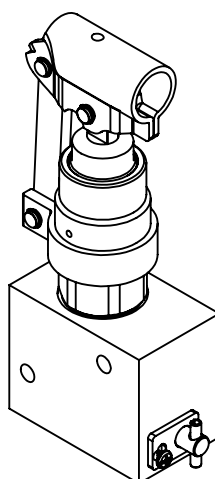
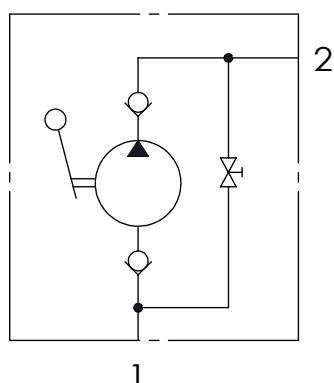
Refer to 16W2

\* Refer to Winner Cartridge Valves Catalog.

Aluminum	0.74 kg(WITHOUT VALVES)

\* If you need the special specification.  
Please contact us.

### TYPICAL CIRCUIT:



### PORT SIZE

X	PORT	PORT	
	1	2	
G02	G 1/4"	G 1/4"	

### Z CARTRIDGE VALVES SELECTION

WITHOUT VALVE

HP0A	HP16W20AN (YDRAULIC HAND PUMP 21.3CC)

Please refer to the list price of cartridge program.

### Y BODY MATERIAL

AR	HIGH-STRENGTH ALUMINUM